

Downcounty Consortium Elementary School Capacity Study

Montgomery County Public Schools
 Final Presentation - June 1, 2015



- Introductions
- MCPS Presentation
 - Who, What, Where, When, and Why?
 - Q & A
- TLP Presentation
 - Project Understanding
 - What is a Capacity Study?
 - The Capacity Study Process
 - Present All Design Options
 - Q & A



- Capacity Study - A Design Investigation of potential classroom additions at multiple schools to increase the program capacity and core capacity of the schools being studied
 - Core Capacity –The capacity of the school based on the size of the core spaces (the media center, the cafeteria, the gym)
 - Program Capacity -The capacity of the school based on the number of classrooms and the programs they host.



What is a Capacity Study?

- Address space shortages at elementary schools in the lower section of the Downcounty Consortium
- Allow superintendent to make recommendations to address the space shortages as part of the FY 2017–2022 Capital Improvements Program (CIP) in October 2015

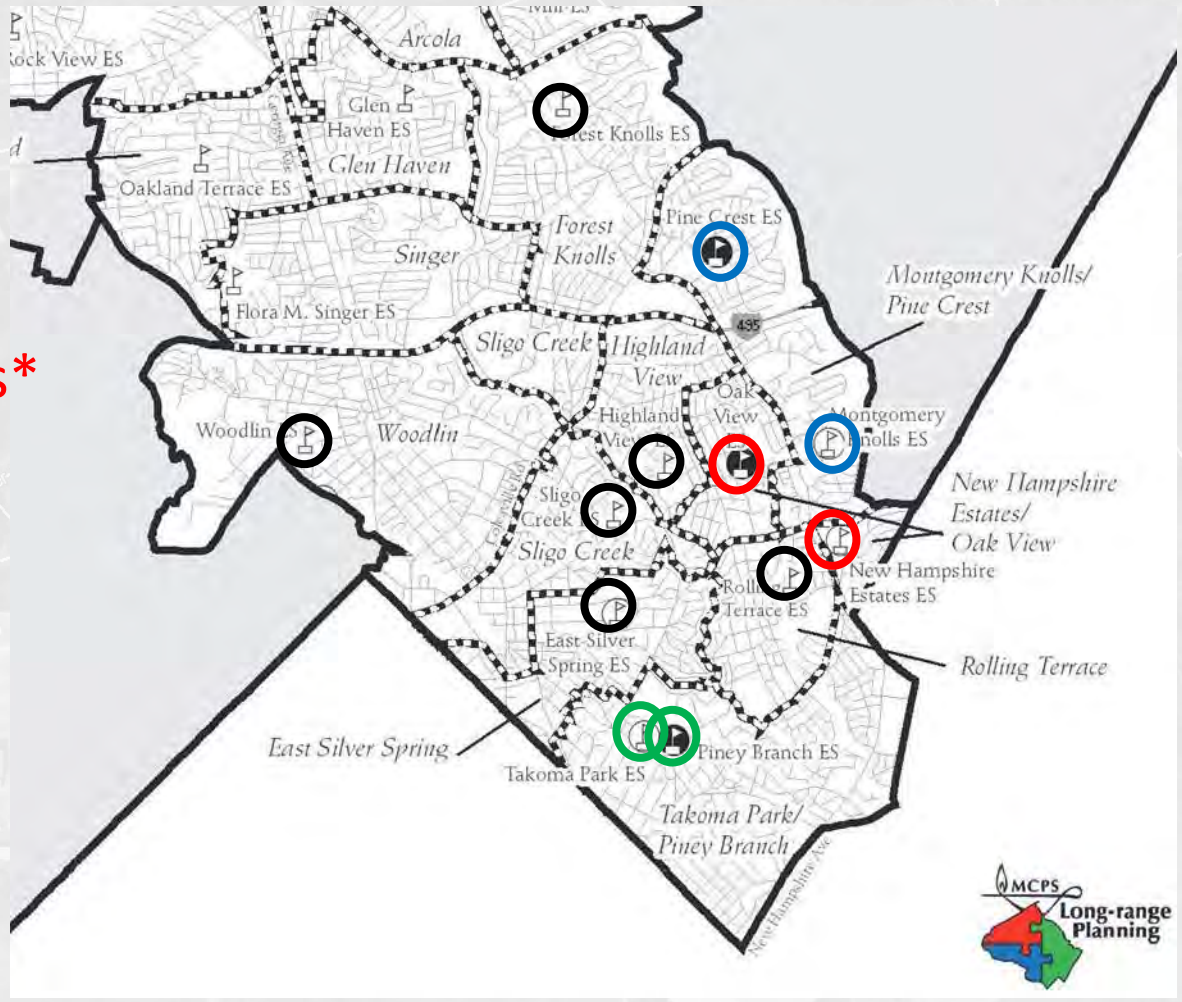


- Learn the following:
 - Which schools we can add classrooms to?
 - How large the classroom additions can be?
 - How much the classroom additions would cost?
- Compare cost of construction of additions to the cost of constructing a new elementary school
- Paired schools will be looked at as paired and unpaired schools
- Board of Education adopted study

School	Grades Served
East Silver Spring ES	pre-K–5
Forest Knolls ES	pre-K–5
Highland View ES	K–5
Montgomery Knolls ES	pre-K–2
New Hampshire Estates ES	pre-K–2
Oak View ES	3–5
Pine Crest ES	3–5
Piney Branch ES	3–5
Rolling Terrace ES	pre-K–5
Sligo Creek ES	K–5
Takoma Park ES	pre-K–2
Woodlin ES	K–5

Which Schools are in the Study?

- East Silver Spring
- Forest Knolls
- Highland View
- Montgomery Knolls*
- New Hampshire Estates*
- Oak View*
- Pine Crest*
- Piney Branch*
- Rolling Terrace
- Sligo Creek
- Takoma Park*
- Woodlin



* Schools in color are paired schools

The Capacity Study Area

- Possible classroom additions at 5 of the 12 schools in the study area

- Montgomery Knolls ES
- New Hampshire Estates ES
- Oak View ES
- Pine Crest ES
- Sligo Creek ES



- Remaining 7 schools have been studied previously or can't be made larger

- East Silver Spring ES Master Planned Addition
- Forest Knolls ES Completed as part of DCC Capacity Study in 2013
- Highland View ES Completed in 2011
- Rolling Terrace ES Completed in 2009
- Woodlin ES Completed in 2013
- Takoma Park/Piney Branch ES Can't be made larger

- Possible classroom additions at schools that are over capacity

- Possible classroom additions at schools that are not over capacity but could relieve schools that are over capacity through future boundary changes

What Will the Study Explore?

DCC Study Lower Area: Enrollments and Space

DCC Study Lower Area: Enrollments and Space

pre-K/K-5 Schools

Paired Schools

School	Enrollment 2014-15	Projected Enrollment					
		2015-16	2016-17	2017-18	2018-19	2019-20	2020-21
East Silver Spring							
Capacity	582	582	582	582	582	582	582
Enrollment	525	560	572	578	576	567	556
space available/deficit	57	22	10	4	6	15	26
Forest Knolls							
Capacity	560	560	560	560	560	560	560
Enrollment	737	785	790	783	794	784	750
space available/deficit	-177	-225	-230	-223	-234	-224	-190
Highland View							
Capacity	298	298	298	298	298	298	298
Enrollment	426	420	425	426	423	410	408
space available/deficit	-128	-122	-127	-128	-125	-112	-110
Rolling Terrace							
Capacity	724	724	724	724	724	724	724
Enrollment	905	915	942	929	919	895	888
space available/deficit	-181	-191	-218	-205	-195	-171	-164
Sligo Creek							
Capacity	664	664	664	664	664	664	664
Enrollment	639	672	676	666	676	678	672
space available/deficit	25	-8	-12	-2	-12	-14	-8
Woodlin							
Capacity	462	462	462	462	462	462	462
Enrollment	623	629	634	618	637	633	635
space available/deficit	-161	-167	-172	-156	-175	-171	-173

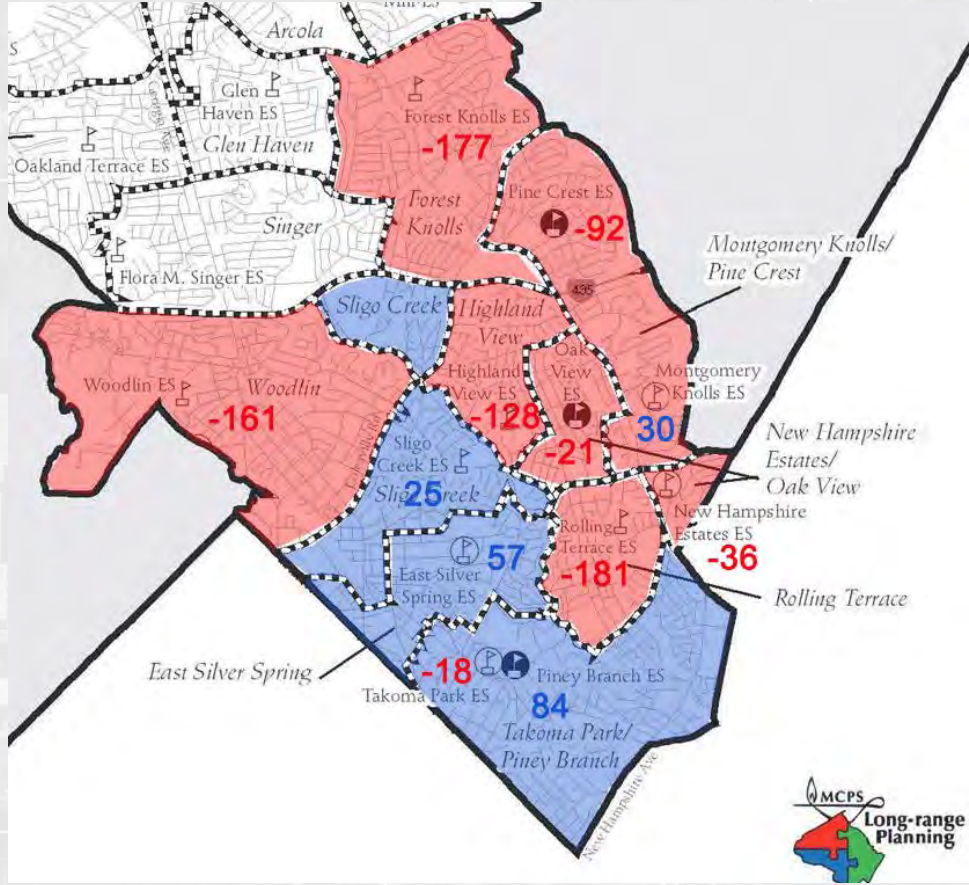
School	Enrollment 2014-15	Projected Enrollment					
		2015-16	2016-17	2017-18	2018-19	2019-20	2020-21
New Hampshire Estates							
Capacity	480	480	480	480	480	480	480
Enrollment	516	535	533	517	504	503	502
space available/deficit	-36	-55	-53	-37	-24	-23	-22
Oak View							
Capacity	358	358	358	358	358	358	358
Enrollment	379	422	443	467	465	462	446
space available/deficit	-21	-64	-85	-109	-107	-104	-88
Montgomery Knolls							
Capacity	540	540	540	540	540	540	540
Enrollment	510	514	506	489	480	479	479
space available/deficit	30	26	34	51	60	61	61
Pine Crest							
Capacity	381	381	381	381	381	381	381
Enrollment	473	465	465	463	468	459	441
space available/deficit	-92	-84	-84	-82	-87	-78	-60
Takoma Park							
Capacity	636	636	636	636	636	636	636
Enrollment	654	665	628	611	599	603	602
space available/deficit	-18	-29	8	25	37	33	34
Piney Branch							
Capacity	611	611	611	611	611	611	611
Enrollment	527	559	608	626	618	607	591
space available/deficit	84	52	3	-15	-7	4	20
Total Capacity	6,296	6,296	6,296	6,296	6,296	6,296	6,296
Total Enrollment	6,914	7,141	7,222	7,173	7,159	7,080	6,970
space available/deficit	-618	-845	-926	-877	-863	-784	-674

Enrollment Projections

Current Capacity

Based on 2014 - 2015 Enrollment

Pre-K/K-5 Schools	2014 - 2015 Enrollment	2014 - 2015 Capacity	2014 - 2015 Space Available / Deficit
East Silver Spring	525	582	57
Forest Knolls	737	560	-177
Highland View	426	298	-128
Rolling Terrace	905	724	-181
Sligo Creek	639	664	25
Woodlin	623	462	-161
Subtotal			-565
Paired Schools	2014 - 2015 Enrollment	2014 - 2015 Capacity	2014 - 2015 Space Available / Deficit
New Hampshire Estates	516	480	-36
Oak View	379	358	-21
Montgomery Knolls	510	540	30
Pine Crest	473	381	-92
Takoma Park	654	636	-18
Piney Branch	527	611	84
Subtotal			-53
TOTAL			-618



Study Area with 2014-2015 Current Capacities

- **No** sites for future schools will be explored in this study
- **No** boundary changes will be explored as part of this study



What Will the Study Not Explore?

- The superintendent will review the capacity studies and cost estimates
- The superintendent will make a recommendation on classroom additions, a new elementary school, or a combination of both, in late October 2015 as part of the FY 2017–2022 CIP
- The superintendent's recommendation will include a request for funds to design and construct what is recommended



- If the superintendent recommends a new elementary school, then a site selection advisory committee would be formed next school year to evaluate site options
- Whether the solution to space shortages are classroom additions or a new school, it is likely that some school boundaries will change
- Boundary changes would be timed to occur when the additional capacity becomes available
- In the meantime, schools will be provided with relocatable classrooms



What Will Happen After the Study?

- Feb – July 2015 Study
 - Fall 2015 Develop 2017-2022 CIP for Additions and/or new school
 - October 2015 Superintendent Recommendation to the BOE
 - November 2015 Board Action on CIP Request
 - May 2016 County Council acts on CIP
 - TBD Design Additions
 - TBD Construction of Additions
 - TBD Move-in New Additions
- and/or**
- 2016-2017 Site Selection for new school
 - TBD Design of new school
 - TBD Construction of new school
 - TBD Move in New School

Next Steps / Timeline

■ Provide Capacity Increasing Options

- Consideration must be given to:
 - The existing facility layout
 - The site potentials and constraints

■ Goals

- Address space shortages
- Compare the cost of multiple additions to the cost of a new school



1. MCPS Develops the Space Summary
2. Architect meets with MCPS and School Staff
3. Architect develops Addition Options
4. Options presented at Community Meetings
5. Feedback provided by the Community
6. Revisions made to the Options
- 7. Final Presentation made to the Community**
8. Final Report Prepared including Cost Estimates and Capacity Data



The Capacity Study Process

Downcounty Elementary Schools - Capacity Study

PreK/K - 5 Schools	Actual Enrollment 2014-2015	Projected Enrollment						Capacity w/ Addition*	Notes
		2015-16	2016-17	2017-18	2018-19	2019-20	2020-21		
East Silver Spring									Proposed Addition
Program Capacity	582	582	582	582	582	582	582	651	3 classroom addition
Enrollment	525	560	572	578	576	567	556	556	would add 69 capacity
Space available/deficit	57	22	10	4	6	15	26	95	AVAILABLE
Forest Knolls									Proposed Addition
Program Capacity	560	560	560	560	560	560	560	663	6 classroom addition
Enrollment	737	785	790	783	794	784	750	750	would add 103 capacity
Space available/deficit	-177	-225	-230	-223	-234	-224	-190	-87	DEFICIT
Highland View **									Proposed Addition
Program Capacity	298	298	298	298	298	298	298	686	19 classroom addition**
Enrollment	426	420	425	426	423	410	408	408	388 capacity**
Space available/deficit	-128	-122	-127	-128	-125	-112	-110	278	AVAILABLE
Rolling Terrace									Proposed Addition
Program Capacity	724	724	724	724	724	724	724	765	2 classroom addition
Enrollment	905	915	942	929	919	895	888	888	would add 41 capacity
Space available/deficit	-181	-191	-218	-205	-195	-171	-164	-123	DEFICIT
Sligo Creek									Proposed Addition
Program Capacity	664	664	664	664	664	664	664	765	5 classroom addition
Enrollment	639	672	676	666	676	678	672	672	would add 101 capacity
Space available/deficit	25	-8	-12	-2	-12	-14	-8	93	AVAILABLE
Woodlin									Proposed Addition
Program Capacity	462	462	462	462	462	462	462	635	11 classroom addition
Enrollment	623	629	634	618	637	633	635	635	would add 173 capacity
Space available/deficit	-161	-167	-172	-156	-175	-171	-173	0	BALANCE
Summary PreK / K -5 Schools									With All Additions
Total Program Capacity	3290	3290	3290	3290	3290	3290	3290	4165	
Total Enrollment	3855	3981	4039	4000	4025	3967	3909	3909	
Space available/deficit	-565	-691	-749	-710	-735	-677	-619	256	AVAILABLE

* Based on Projected 2020 - 2021 Enrollment and with all 6 PreK/K - 5 school additions constructed by 2020, pending funding

** The 6 Classroom Alternate is included

Downcounty Elementary Schools - Capacity Study (continued)

Paired Schools	Actual Enrollment 2014-2015	Projected Enrollment						Capacity w/ Addition * (With Current Pairing)	Capacity w/ Addition * (If Schools were to become Unpaired)	Notes
		2015-16	2016-17	2017-18	2018-19	2019-20	2020-21			
New Hampshire Estates										
Program Capacity	480	480	480	480	480	480	480	732	740	<i>Proposed Addition</i> 12/9 classroom addition** would add 252/260 capacity **
Enrollment	516	535	533	517	504	503	502	502	502	
Space available/deficit	-36	-55	-53	-37	-24	-23	-22	230	238	
Oak View										
Program Capacity	358	358	358	358	358	358	358	634	637	<i>Proposed Addition</i> 13/21 classroom addition ** would add 276/279 capacity **
Enrollment	379	422	443	467	465	462	446	446	446	
Space available/deficit	-21	-64	-85	-109	-107	-104	-88	188	191	
Montgomery Knolls										
Program Capacity	540	540	540	540	540	540	540	648	637	<i>Proposed Addition</i> 6 / 0 classroom addition** would add 108/97 capacity**
Enrollment	510	514	506	489	480	479	479	479	479	
Space available/deficit	30	26	34	51	60	61	61	169	158	
Pine Crest										
Program Capacity	381	381	381	381	381	381	381	657	646	<i>Proposed Addition</i> 12/15 classroom additon ** would add 276/265 capacity **
Enrollment	473	465	465	463	468	459	441	441	441	
Space available/deficit	-92	-84	-84	-82	-87	-78	-60	216	205	
Takoma Park										
Program Capacity	636	636	636	636	636	636	636	636	636	<i>Proposed Addition</i> no addition, no added capacity cannot become unpaired
Enrollment	654	665	628	611	599	603	602	602	602	
Space available/deficit	-18	-29	8	25	37	33	34	34	34	
Piney Branch										
Program Capacity	611	611	611	611	611	611	611	611	611	<i>Proposed Addition</i> no addition, no added capacity cannot become unpaired
Enrollment	527	559	608	626	618	607	591	591	591	
Space available/deficit	84	52	3	-15	-7	4	20	20	20	
Summary Paired Schools										
Total Program Capacity	3006	3006	3006	3006	3006	3006	3006	3918	3907	With All Additions AVAILABLE
Total Enrollment	3059	3160	3183	3173	3134	3113	3061	3061	3061	
Space available/deficit	-53	-154	-177	-167	-128	-107	-55	857	846	

* Based on Projected 2020 - 2021 Enrollment and with 4 unpaired school additions constructed by 2020, pending funding

** Two numbers reflect paired / unpaired data respectively

Downcounty Elementary Schools - Capacity Study (continued)

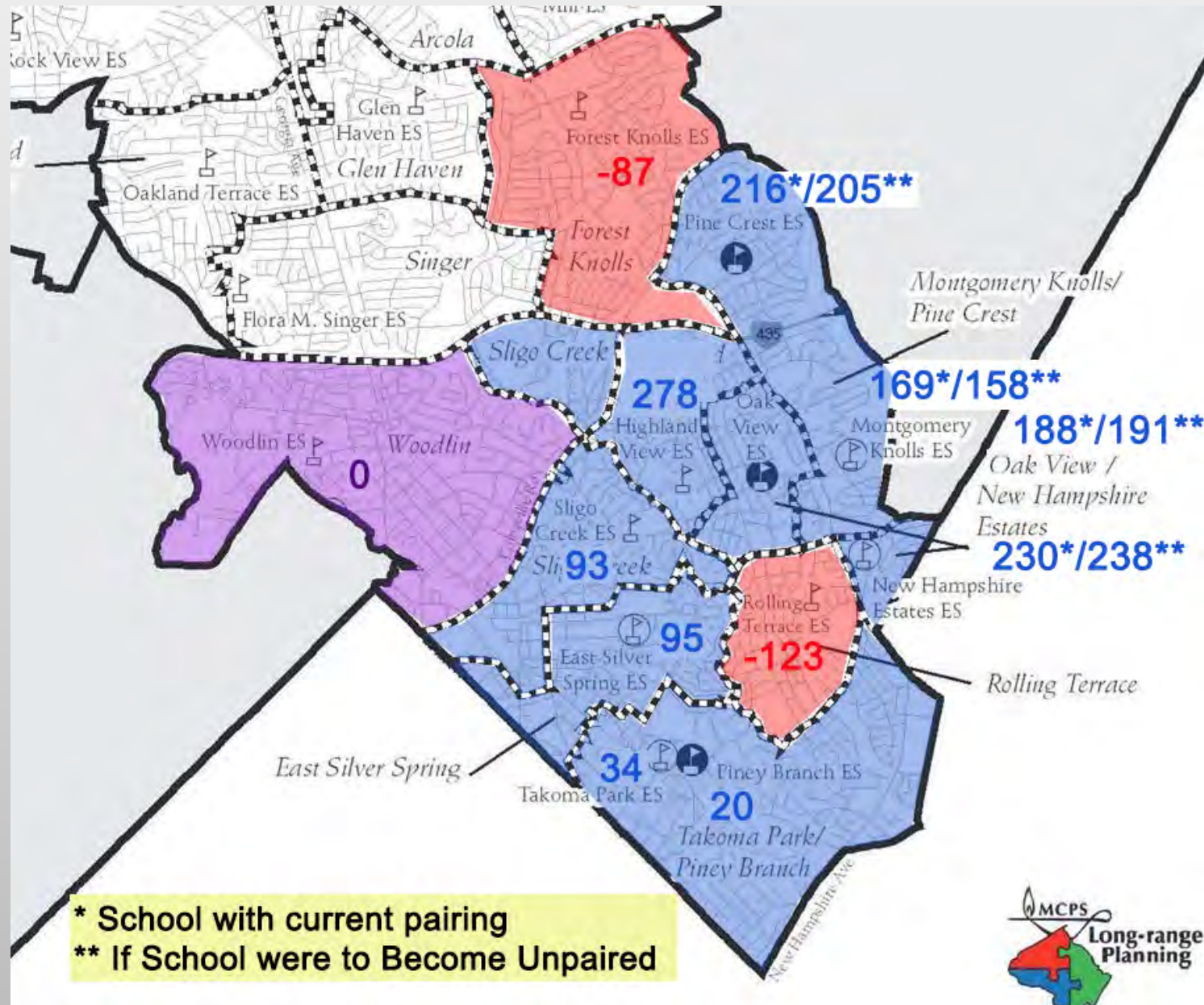
SUMMARY

All 12 Schools in the Study	Actual Enrollment	Projected Enrollment						Capacity w/ Addition * (With Current Pairing)	Capacity w/ Addition * (If Schools were to become Unpaired)	Notes
	2014-2015	2015-16	2016-17	2017-18	2018-19	2019-20	2020-21			
Total Program Capacity	6296	6296	6296	6296	6296	6296	6296	8083	8072	
Total Enrollment	6914	7141	7222	7173	7159	7080	6970	6970	6970	
Space available/deficit w/ all Additions in this Study	-618	-845	-926	-877	-863	-784	-674	1113	1102	AVAILABLE

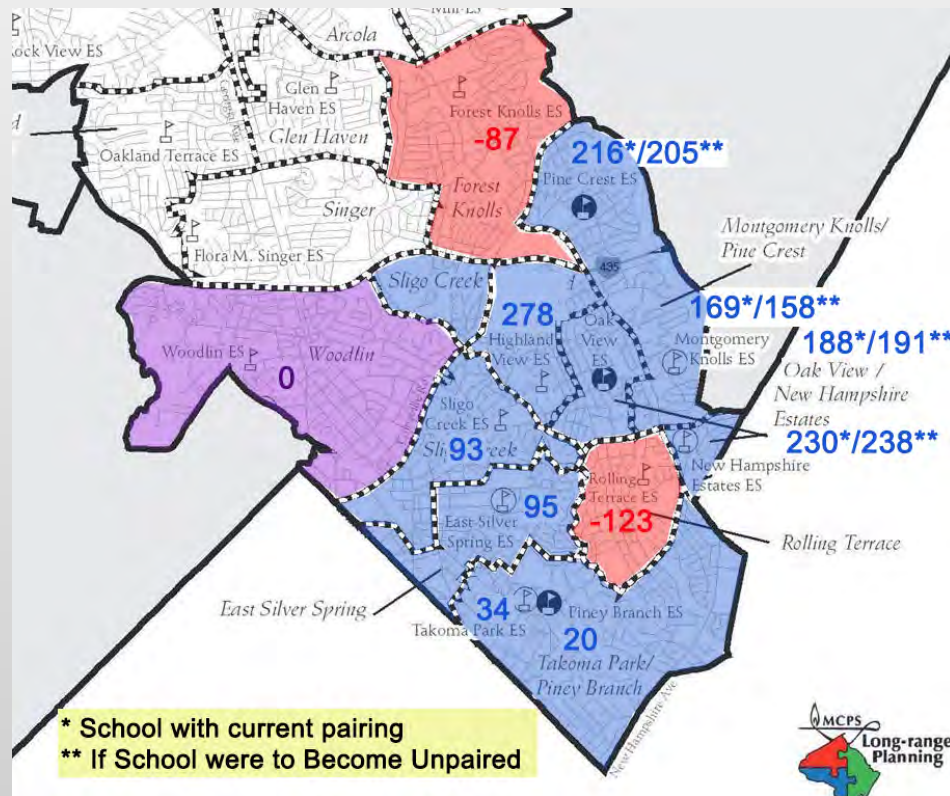
* Based on Projected 2020 - 2021 Enrollment and with all 10 school additions constructed by 2020, pending funding

Capacity with All 10 Study Additions Based on Projected 2020 - 2021 Enrollment					
Pre-K/K-5 Schools	Projected 2020 - 2021 Enrollment	Capacity with Additions	2020 - 2021 Space Available / Deficit		
East Silver Spring	556	651	95		
Forest Knolls	750	663	-87		
Highland View	408	686	278		
Rolling Terrace	888	765	-123		
Sligo Creek	672	765	93		
Woodlin	635	635	0		
Subtotal			256		
Paired Schools	Projected 2020 - 2021 Enrollment	Capacity with All 4 Study Additions With Current Pairings	2020 - 2021 Space Available / Deficit With Current Pairings	Capacity with All 4 Study Additions If Schools were to Become Unpaired	2020 - 2021 Space Available / Deficit If Schools were to Become Unpaired
New Hampshire Estates (PreK-2)	502	732	230	740	238
Oak View (3-5)	446	634	188	637	191
Montgomery Knolls (PreK-2)	479	648	169	637	158
Pine Crest (3-5)	441	657	216	646	205
Takoma Park (PreK-2)*	602	636	34	cannot become unpaired	34
Piney Branch (3-5)*	591	611	20	cannot become unpaired	20
Subtotal			857		846
TOTAL			1113		1102
* No addition can be built at this school					

Capacity with All 10 Additions



Capacity with All 10 Additions



Capacity with All 10 Study Additions					
Based on Projected 2020 - 2021 Enrollment					
Pre-K/K-5 Schools	Projected 2020 - 2021 Enrollment	Capacity with Additions	2020 - 2021 Space Available / Deficit		
East Silver Spring	556	651	95		
Forest Knolls	750	663	-87		
Highland View	408	686	278		
Rolling Terrace	888	765	-123		
Sligo Creek	672	765	93		
Woodlin	635	635	0		
Subtotal			256		
Paired Schools	Projected 2020 - 2021 Enrollment	Capacity with All 4 Study Additions With Current Pairings	2020 - 2021 Space Available / Deficit With Current Pairings	Capacity with All 4 Study Additions If Schools were to Become Unpaired	2020 - 2021 Space Available / Deficit If Schools were to Become Unpaired
New Hampshire Estates (PreK-2)	502	732	230	740	238
Oak View (3-5)	446	634	188	637	191
Montgomery Knolls (PreK-2)	479	648	169	637	158
Pine Crest (3-5)	441	657	216	646	205
Takoma Park (PreK-2)*	602	636	34	cannot become unpaired	34
Piney Branch (3-5)*	591	611	20	cannot become unpaired	20
Subtotal			857		846
TOTAL			1113		1102

* No addition can be built at this school

Capacity with All 10 Additions

- East Silver Spring
- Forest Knolls
- Highland View
- Rolling Terrace
- Sligo Creek
- Woodlin
- New Hampshire Estates (K-2)
- Oak View (3-5)
- Montgomery Knolls (K-2)
- Pine Crest (3-5)
- Takoma Park (K-2)
- Piney Branch (3-5)

Presentation Order of the 12 Schools

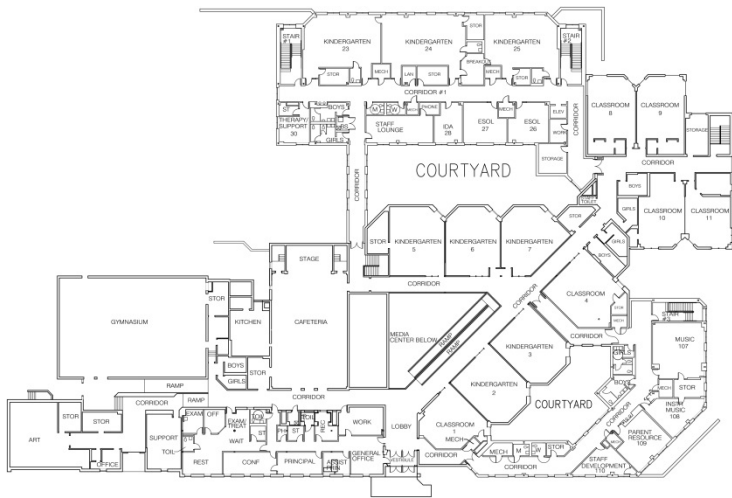


- Currently has Excess Capacity 57
- Currently no relocatables
- Two Story School
- Very Small Site (3.8 Acres)
- Original School built in 1936
- Additions in 1963, 1964, 1975, 1989 and 2008
- Design Issues / Constraints
 - Cold/Dark Shell in Lower Level

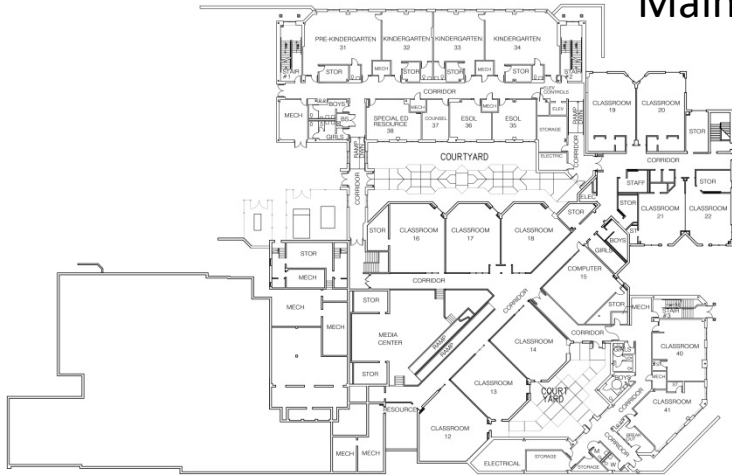
- Current Core Capacity – 640
- Current Program Capacity – 582
- Current Enrollment (2014-15) - 525
- Proposed Core Capacity – 640
- Projected Program Capacity w/ Addition – 651
- Projected Enrollment 2020-21 – 556
- Projected Excess Capacity after Addition – 95



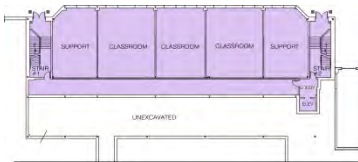
East Silver Spring - Data



Main Level Floor Plan



Lower Level Floor Plan



Lower Basement Level Floor Plan

East Silver Spring Elementary School Addition Square Foot Summary

Updated 5-7-2015

When this project is complete, the following spaces are to be provided.
The capacity will be 651 with a core of 640.

Facility	#	Description	Net Sq. Ft.	Total Net Sq. Ft.
Classrooms				
Standard	3	Includes 150 s.f. storage	900	2700
Support Rooms				
Large Instructional Support Room	1		600	600
Staff Development Area				
Staff Development Office	1		100	100
Reading Specialist Office	1		100	100
Training/Conference Room	1		450	450
Total	3			3950

Renovation – 5,600 SF

Graphics by Delmar Architects

East Silver Spring – Proposed Addition





East Silver Spring – Site Plan – No Site Work





- Currently has Capacity Deficit **-177**
- Currently 4 relocatables
- Single Story School
- Small Site (7.7 Acres)
- Original School built in 1993
- Addition in 2006
- Design Issues / Constraints
 - Physically Disabled Special Education Program

- Current Core Capacity – **640/520***
- Current Program Capacity – **560**
- Current Enrollment (2014-15) - **737**
- Proposed Core Capacity – **640**
- Projected Program Capacity w/ Addition – **663**
- Projected Enrollment 2020-21 – **750**
- Projected Capacity Deficit after Addition – **-87**

** Current Capacity Default Classification / Actual Capacity Classification*



Forest Knolls- Data



Facility	#	Description	Net Sq. Ft.	Total Net Sq. Ft.
Classrooms				
Prekindergarten	1	Includes 250 s.f. storage	1300	1300
Standard	4	Includes 150 s.f. storage	900	3600
Instrumental Music Room	1		450	450
Dual purpose Room	1		1000	1000
Support Rooms				
Small Instructional Support Room	2		450	900
Itinerant Staff Office	1		150	150
Staff Development Area				
Staff Development Office	1		100	100
Reading Specialist Office	1		100	100
Training/Conference Room	1		450	450
Multipurpose Room				
Multipurpose Room Expansion	1	Expand current MPR	800	800
Total	6			8850

Main Level Addition – 11,700 SF

Multi-Purpose Room Renovation – 700 SF

Main Level Floor Plan

Forest Knolls – Proposed Addition



Forest Knolls – Proposed Site Plan



- Currently has Capacity Deficit **-177**
- Currently 6 relocatables
- Two Story School
- Small Site (6.6 Acres)
- Original School built in 1953
- Additions in 1969, 1974, 1994
- Design Issues / Constraints
 - Two Story / Split Level Structure
 - Current Small Enrollment

- Current Core Capacity – **640/500***
- Current Program Capacity – **298**
- Current Enrollment (2014-15) - **426**
- Proposed Core Capacity – **640**
- Projected Program Capacity w/ Addition – **686**
- Projected Enrollment 2020-21 – **408**
- Projected Excess Capacity after Addition – **278**

** Current Capacity Default Classification / Actual Capacity Classification*



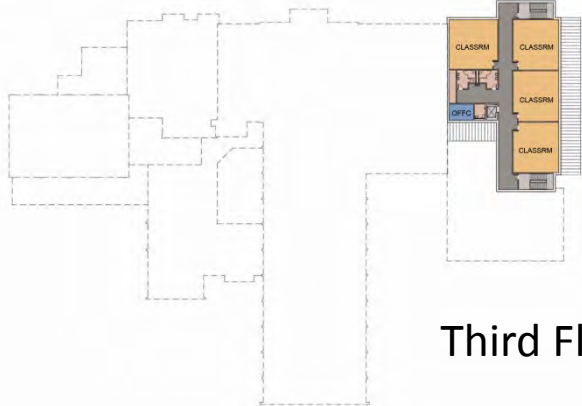
Highland View - Data

**Highland View Elementary School Addition
Square Foot Summary**

Updated 5/15/2015

When this project is complete, the following spaces are to be provided:
Capacity after addition will be 548 or 686 including the Add Alternate.

Facility	#	Description	Net Sq. Ft.	Total Net Sq. Ft.
Classrooms				
Kindergarten	4	Includes 250 s.f. storage	1300	5200
Grades 1-5	6	Includes 150 s.f. storage	900	5400
Special Education				
Therapy/Support Room	1		250	250
Home School Model Pull-Out Room	1		300	300
Home School Model Office	1		200	200
Instructional Support Rooms				
Itinerant Staff Office	2	Locate near Counselor	150	300
Small Instructional Support Room	1		450	450
Art	1	Repurpose existing as CR	1100	1100
Music	1	Repurpose existing as CR	1050	1050
Instrumental Music Room	1	Locate next to storage	450	450
Dual purpose Room	1	Locate next to art and music	1000	1000
PTA Storage	1		150	150
Total	13			15850
Design as add alternate:				
Grades 1-5	6	Includes 150 s.f. storage	900	5400
Total including Alternate	19			21250



Third Floor Plan



Second Floor Plan



First Floor Plan

First Floor Addition – 23,077 SF
Second Floor Addition – 7,272 SF
Third Floor Addition – 6,905 SF
Total Addition – 37,254 SF

First Floor Renovation – 8,497 SF
Total Renovation – 8,497 SF

These Areas include the Add Alternate

Graphics by Proffitt & Associates Architects

Highland View – Proposed Addition





Graphics by Proffitt & Associates Architects

Highland View – Proposed Site Plan





- Currently has Capacity Deficit **-181**
- Currently 8 relocatables
- Two Story School
- Very Small Site (4.3 Acres)
- Original School built in 1989
- Addition in 2012
- Design Issues / Constraints
 - Currently has County Daycare, Pre-K and HS Pre-K
 - Separate play areas
 - Topography Challenges

- Current Core Capacity – **640**
- Current Program Capacity – **724**
- Current Enrollment (2014-15) - **905**
- Proposed Core Capacity – **740**
- Projected Program Capacity w/ Addition – **765**
- Projected Enrollment 2020-21 – **888**
- Projected Capacity Deficit after Addition – **-123**



Rolling Terrace - Data



LEGEND

- EXISTING FACILITY
- PROPOSED ADDITION

**Rolling Terrace Elementary School
Square Foot Summary**

When this project is complete, the following spaces are to be provided:
The capacity will be 765 with a core of 740.

Updated 5-7-2013

Facility	#	Description	Net Sq. Ft.	Total Net Sq. Ft.
Classrooms				
Kindergarten	1	Includes 250 s.f. storage	1300	1300
Standard Classrooms	1	Includes 250 s.f. storage	900	900
ESOL	4		450	1800
Support Rooms				
Therapy/Support Room	1		250	250
Small Instructional Room	1		450	450
Instructional Data Assistant Office	1		150	150
Reading Recovery Room	3		300	300
Instrumental Music Room	1	locate next to storage	400	400
Counseling Suite				
Counselor's Office	1		250	250
Itinerant Staff Office	1		150	150
Staff Development Area				
Staff Development Office	1		100	100
Reading Specialist Office	1		100	100
Training Conference Room	1		450	450
Total	2			6600

Main Level Addition – 5,000 SF
Upper Level Addition – 5,000 SF
Total Addition – 10,000 SF



Main Level Renovation – 300 SF
Upper Level Renovation – 300 SF
Total Renovation – 600 SF

Graphics by Smolen Emr + Associates

Rolling Terrace – Proposed Main Level Addition / Site Plan



LEGEND

-  EXISTING FACILITY
-  PROPOSED ADDITION



Graphics by Smolen Emr + Associates



Rolling Terrace – Proposed Upper Level Addition / Site Plan



- Currently has Excess Capacity **12**
- Currently no relocatables
- Three Story School
- Shared Site with SSIMS (14.7 Acres)
- Original School built in 1934
- 10 Additions, most recent 1999
- Design Issues / Constraints
 - Not enough Parking - @ 60 spaces
 - Share building with SSIMS
 - Challenging Topography
 - Abandoned Auto Body Building

- Current Core Capacity – **640**
- Current Program Capacity – **664**
- Current Enrollment (2014-15) - **652**
- Proposed Core Capacity – **740**
- Projected Program Capacity w/ Addition – **765**
- Projected Enrollment 2020-21 – **672**
- Projected Excess Capacity after Addition – **93**



Sligo Creek - Data

Sligo Creek Elementary School Addition Square Foot Summary

When this project is complete, the following spaces are to be provided:
The capacity will be 765 with a core of 740.

Updated November 4, 2014

Facility	#	Description	Net Sq. Ft.	Total Net Sq. Ft.
Classrooms				
Kindergarten	2		1300	2600
Standard	2		900	1800
Dual purpose Room	1		1000	1000
Support Rooms				
Therapy/Support Room	1		250	250
Testing Room	1		150	150
Sensory Room	1		300	300
Multipurpose Room				
Multipurpose Room (increase existing)	1		800	800
Chair Storage	1		200	200
Table Storage	1		200	200
Administration				
Conference	1		300	300
Counseling Area				
Counselor's Office	1		250	250
Itinerant Staff Office	1		150	150
Staff Development Area				
Staff Development Office	1		100	100
Reading Specialist Office	1		100	100
Training/Conference Room	1		450	450
Building Service Facilities				
General Storage	1		250	250
Building Services Outdoor Storage	1		175	175
Total	5			9075



Lower Level Addition – 2,000 SF
 Main Level Addition – 8,200 SF
 Second Floor Addition – 8,200 SF
Total Addition – 18,400 SF

Lower Level Renovation – 500 SF
 Main Level Renovation – 3,300 SF
 Second Floor Renovation – 3,300 SF
Total Renovation – 7,100 SF

Sligo Creek – Proposed Addition



Sligo Creek – Proposed Site Plan





- Currently has Capacity Deficit **-161**
- Currently 9 relocatables
- One Story School
- Large Site (10.9 Acres)
- Original School built in 1944
- Additions in 1954, 1960, 1983 and 1988
- Design Issues / Constraints
 - Master-planned as a campus of separate structures; connected in the 1980s
 - Shares the site with Woodlin Child Development Center

- Current Core Capacity – **640/520***
- Current Program Capacity – **462**
- Current Enrollment (2014-15) - **623**
- Proposed Core Capacity – **640**
- Projected Program Capacity w/ Addition – **635**
- Projected Enrollment 2020-21 – **635**
- Projected Excess Capacity / Capacity Deficit after Addition – **0**

** Current Capacity Default Classification / Actual Capacity Classification*

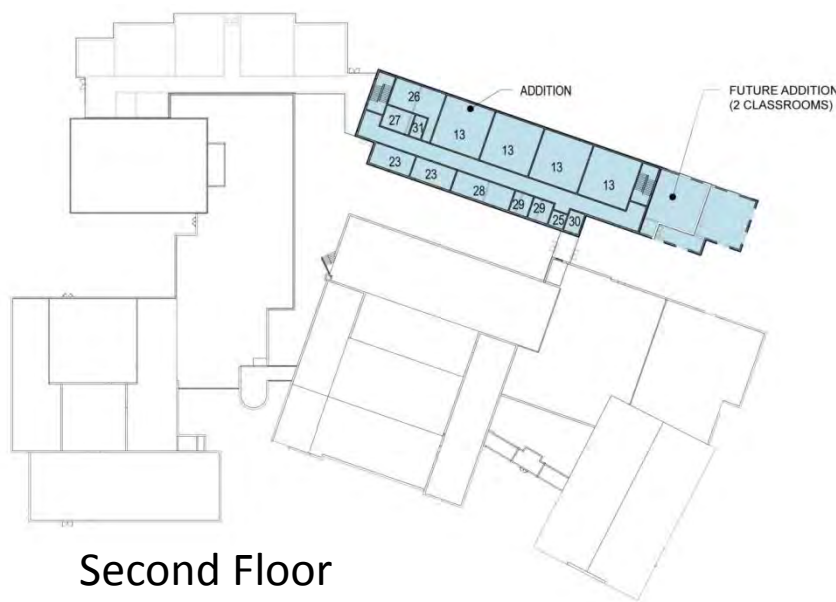


Woodlin - Data

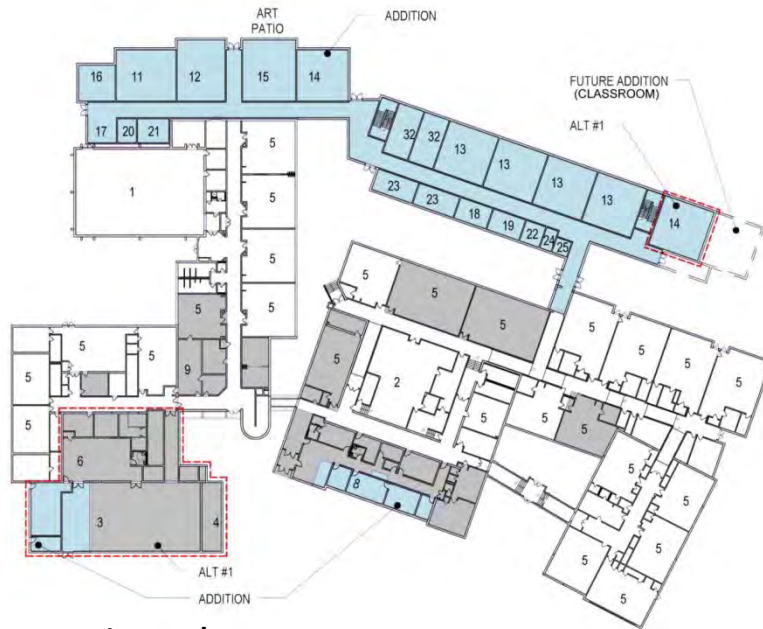
**Woodlin Elementary School Addition
Square Foot Summary (Feasibility)**

When this project is complete, the following spaces are to be provided:
Capacity after the addition will be 635 with a 640 core capacity.
The architect should renovate the main administrative office into a contiguous space with a security vestibule at the entrance.
Updated 9/27/13

Facility	#	Description	Net Sq. Ft.	Total Net Sq. Ft.
Classrooms				
Kindergarten	2	Includes 250 s.f. storage	1300	2600
Standard Grades 1-5	5	Includes 150 s.f. storage	900	4500
LRT Classroom (Special Education)	1	Includes 150 s.f. storage	900	900
Art	1	Includes 250 s.f. storage	1100	1100
Music	1	Includes 250 s.f. storage	1050	1050
Instrumental Music Room	1		450	450
Dual purpose Room	1	Locate near art and music	1000	1000
Support Rooms				
Large Instructional Support Room	1		600	600
Small Instructional Support Rooms	2		450	900
Special Education Conference Room	1		250	250
Therapy/Support Room	1	Repurpose room 31 for storage	250	250
Testing/Conference Room	1		150	150
Instructional Data Assistant Office	1		250	250
Support Staff Office	1		150	150
Itinerant Staff Office	1		150	150
Staff Development Area				
Staff Development Office	1		100	100
Reading Specialist Office	1		100	100
Training/Conference Room	1		450	450
Administration				
General Office	1		375	0
Workroom	1		300	0
Principal's Office	1		250	0
Assistant Principal's Office	1		150	0
Conference	1		300	0
Record Room	1		100	0
Telephone Booth	1		50	0
Storage	1		100	0
Testing Room	1		150	0
Toilet Room	1		50	0
2nd floor Workroom	1		75	75
Building Service Facilities				
General Storage	1		250	250
PTA Storage	1		150	150
Total	8			15425
Design as Add Alternate:				
Multipurpose Room				
Multipurpose Room	1	Consider expansion by 900 s.f.		
Chair Storage	1		3200	3200
Table Storage	1		150	150
Platform	1		150	150
Before/After Care Kitchenette	1		450	450
Before/After Care Storage	1	100	100	
Kitchen				
Serving Area	1	Consider renovation and expansion		
Walk-in Cooler/Freezer	1		300	300
Dry Storage	1		155	155
Office	1		192	192
Toilet Room	1		100	100
Preparation Area	1		70	70
Compactor/Trash Room	1		555	555
General Storage and Receiving	1		150	150
Add-Alternate Total				6152
Total Including Add Alternate				21577



Second Floor



First Floor

Total Addition – 32,977 SF
Total Renovation – 12,269 SF
These Areas include Alternate #1

Graphics by Moseley Architects

Woodlin – Proposed Addition





Graphics by Moseley Architects

Woodlin – Proposed Site Plan





- Current Core Capacity – 640
- Current Program Capacity – 480
- Current Enrollment (2014-15) - 516
- Proposed Core Capacity – 740
- Projected Program Capacity w/ Addition – 732/740*
- Projected Enrollment 2020-21 – 502
- Projected Excess Capacity after Addition – 230/238*

* Capacities Provided for PreK-2 and PreK-5 Options respectively

- Currently has Capacity Deficit -36
- Currently no Relocatables
- Three Story School
- Very Small Site (3.3 Acres)
- Paired with Oak View ES
- Grades PreK-2
- Original School Built in 1973
- Additions in 1988 and 2009
- Design Issues / Constraints
 - Sloping site provides daylighting to Lower Level
 - Access Options
 - Adjacent Forest (Piney Branch Rd)



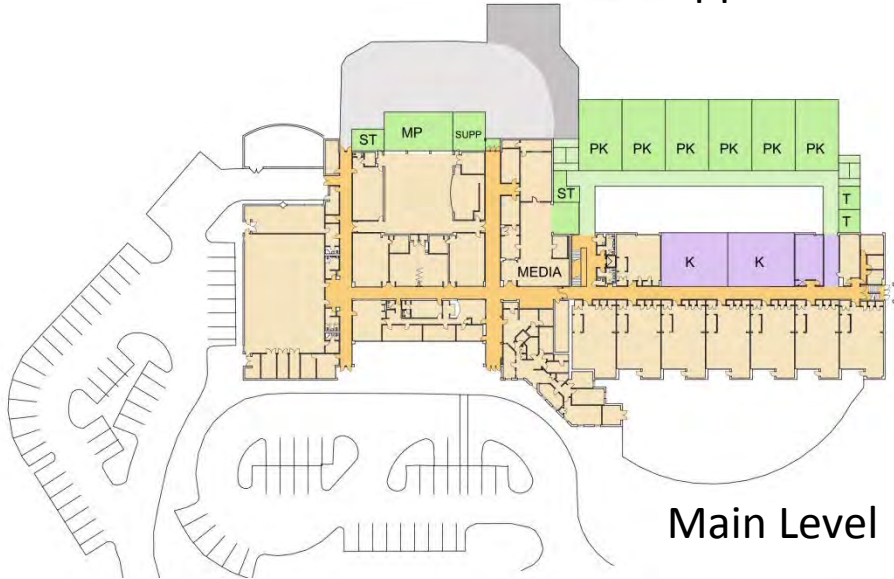
New Hampshire Estates - Data

New Hampshire Estates Elementary School (Grades pre-K-2)
Square Foot Summary

Updated 2-18-2015

The capacity will be 732 with a core of 740.

Facility	#	Description	Net Sq. Ft.	Total Net Sq. Ft.
Classrooms				
Prekindergarten	6		1300	7800
Kindergarten	2		1300	2600
Standard	3			
Dual purpose Room	1		1000	1000
Support Rooms				
Large Instructional Support Room	1		600	600
Small Instructional Support Room	2		450	900
Speech/Language Room	1		250	250
Therapy/Support Room	1		250	250
Title I Parent Resource Room (if required)	1		500	500
Staff Development Area				
Staff Development Office	1		100	100
Reading Specialist Office	1		100	100
Training/Conference Room	1		450	450
Counseling Area				
Counselor's Office	1		250	250
Itinerant Staff Office	1		150	150
Multipurpose Room				
Multipurpose Room (increase existing)	1		1100	1100
Chair Storage	1		200	200
Building Service Facilities				
General Storage	1		250	250
PTA Storage	1		150	150
Total	12			16650



Lower Level Addition – 10,200 SF
Main Level Addition – 13,750 SF
Upper Level Addition – 9,750 SF
Total Addition – 33,700 SF

Lower Level Renovation – 3,500 SF
Main Level Renovation – 3,500 SF
Upper Level Renovation – 850 SF
Total Renovation SF – 7,850 SF

New Hampshire Estates – Proposed Addition (PreK-2)



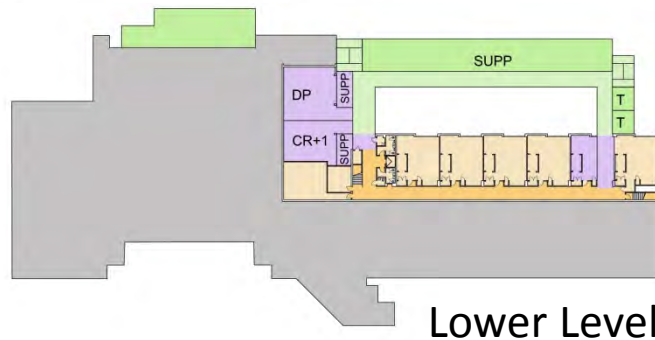
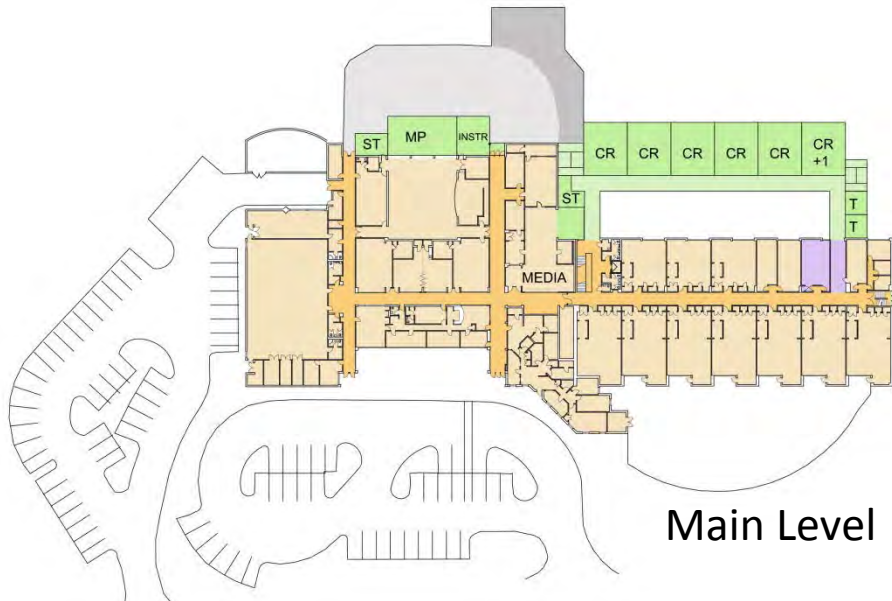
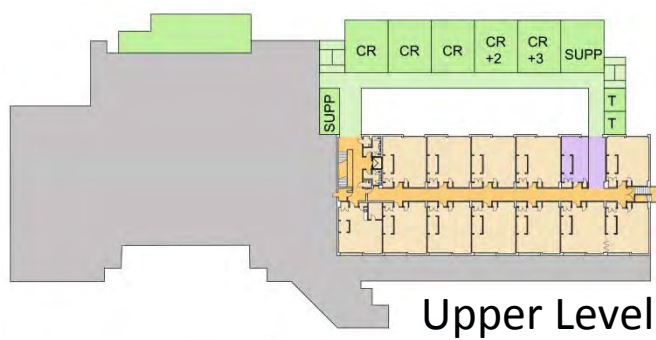
New Hampshire Estates – Proposed Site Plan (PreK-2)

New Hampshire Estates Elementary School (Grades pre-K-5) Square Foot Summary

When this project is complete, the following spaces are to be provided:
The capacity will be 740 with a core of 740

Updated 2-18-2015

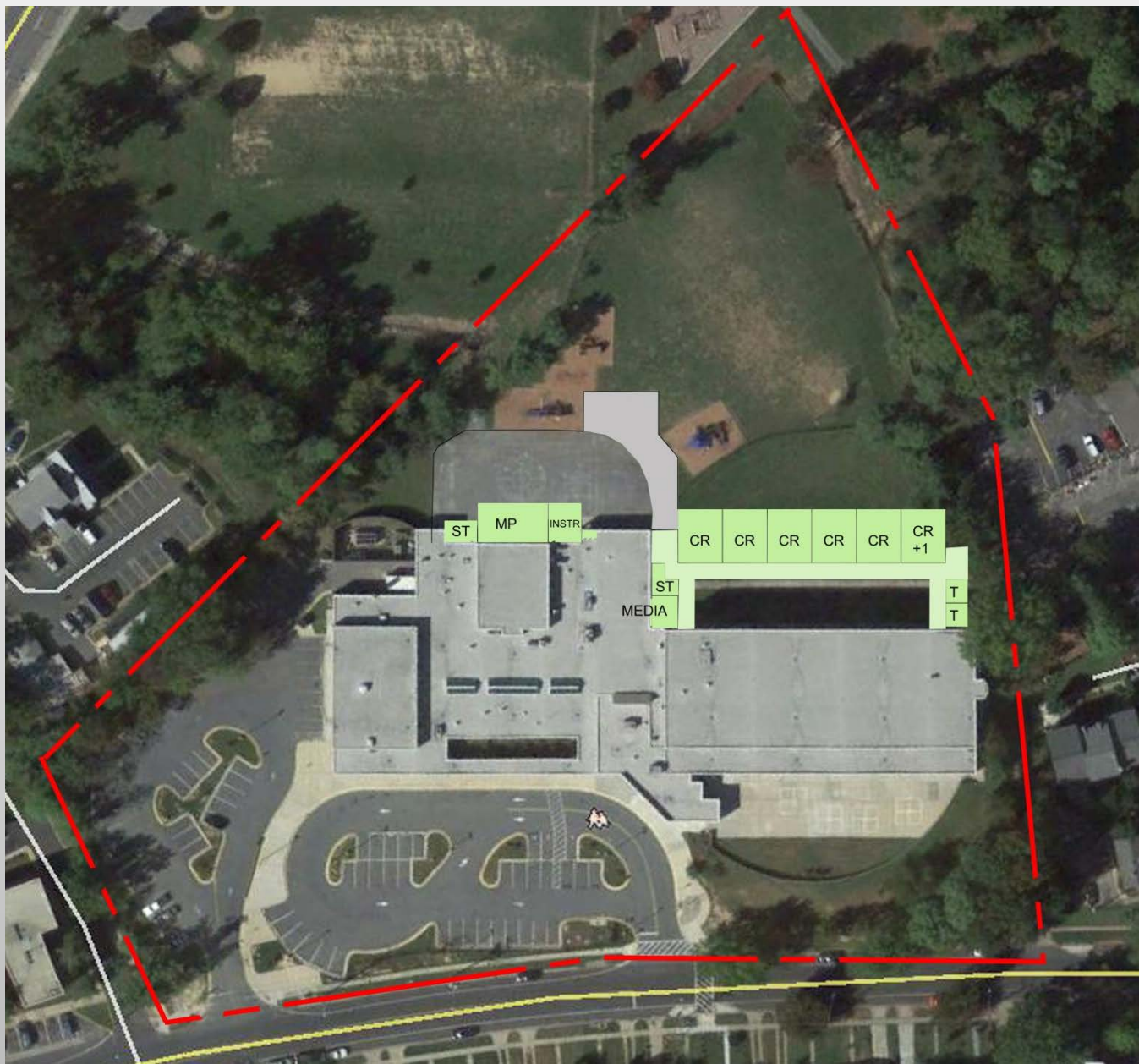
Facility	#	Description	Net Sq. Ft.	Total Net Sq. Ft.
Classrooms				
Standard	8		900	7200
Instrumental Music Room	1		450	450
Dual purpose Room	1		1000	1000
Support Rooms				
Large Instructional Support Room	1		600	600
Small Instructional Support Room	2		450	900
Speech/Language Room	1		250	250
Therapy/Support Room	1		250	250
Title I Parent Resource Room	1		500	500
Staff Development Area				
Staff Development Office	1		100	100
Reading Specialist Office	1		100	100
Training/Conference Room	1		450	450
Counseling Area				
Counselor's Office	1		250	250
Itinerant Staff Office	1		150	150
Multipurpose Room				
Multipurpose Room (increase existing)	1		1100	1100
Chair Storage	1		200	200
Building Service Facilities				
General Storage	1		250	250
PTA Storage	1		150	150
Total	9			13900



Lower Level Addition – 6,800 SF
 Main Level Addition – 11,750 SF
 Upper Level Addition – 9,750 SF
Total Addition – 28,300 SF

Lower Level Renovation – 3,500 SF
 Main Level Renovation – 850 SF
 Upper Level Renovation – 850 SF
Total Renovation SF – 4,350 SF

New Hampshire Estates – Proposed Addition (PreK-5)



New Hampshire Estates – Proposed Site Plan (PreK-5)



- Currently has Capacity Deficit -21
- Currently 1 Relocatable
- Two Story School
- Large Site (11.2 Acres)
- Paired with NH Estates ES
- Grades 3-5
- Original School Built in 1949
- Additions in 1953, 1983, and 2005
- Design Issues / Constraints
 - Sloping site
 - On Site Forest

- Current Core Capacity – 640/600**
- Current Program Capacity – 358
- Current Enrollment (2014-15) - 379
- Proposed Core Capacity – 640
- Projected Program Capacity w/ Addition – 634/637*
- Projected Enrollment 2020-21 – 446
- Projected Excess Capacity after Addition – 188/191*

**Capacities Provided for 3-5 and PreK-5 Options respectively*

*** Current Capacity Default Classification / Actual Capacity Classification*



Oak View - Data

Oak View Elementary School (Grades 3-5)
Square Foot Summary

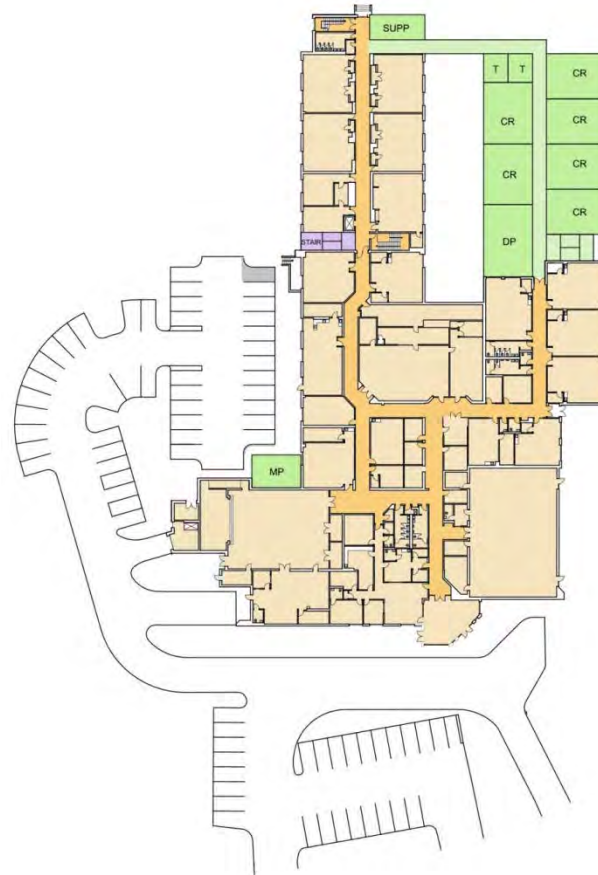
When this project is complete, the following spaces are to be provided:
 The capacity will be 634 with a core of 640.

Updated Feb. 4, 2015

Facility	#	Description	Net Sq. Ft.	Total Net Sq. Ft.
Classrooms				
Standard	12		900	10800
Instrumental Music Room	1		450	450
Dual purpose Room	1		1000	1000
Support Rooms				
Title I Parent Resource Room	1		500	500
Staff Development Area				
Staff Development Office	1		100	100
Reading Specialist Office	1		100	100
Training/Conference Room	1		450	450
Counseling Area				
Counselor's Office	1		250	250
Itinerant Staff Office	1		150	150
Multipurpose Room				
Multipurpose Room (increase existing)	1		500	500
Building Service Facilities				
General Storage	1		250	250
PIA Storage	1		150	150
Total	13			14700



Lower Level

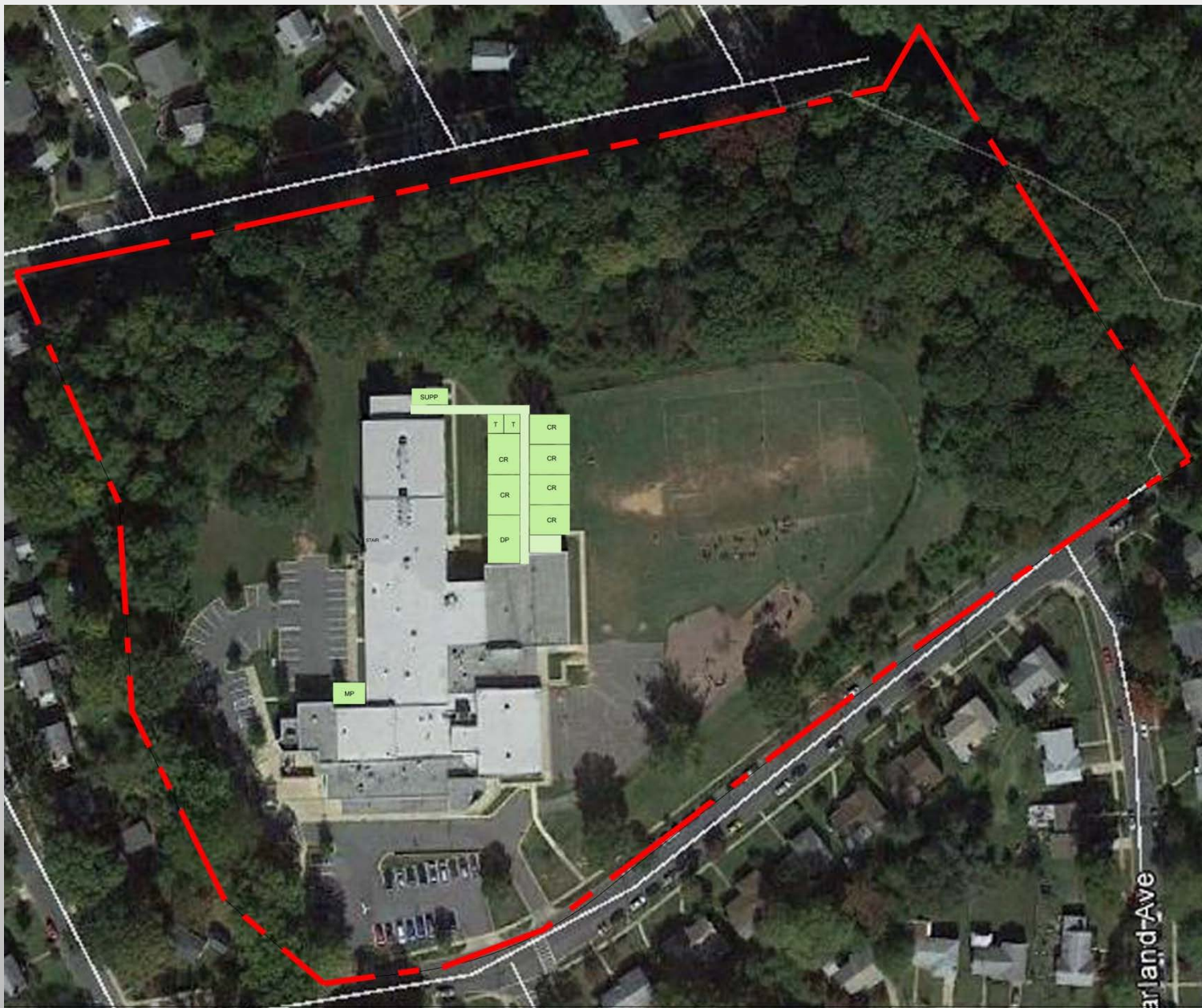


Main Level

Lower Level Addition – 9,900 SF
Main Level Addition – 10,430 SF
Total Addition – 20,330 SF

Stair Renovation – 300 SF

Oak View – Proposed Addition (3-5)



Oak View – Proposed Site Plan (3-5)

Oak View Elementary School (Grades preK-5) Space Summary

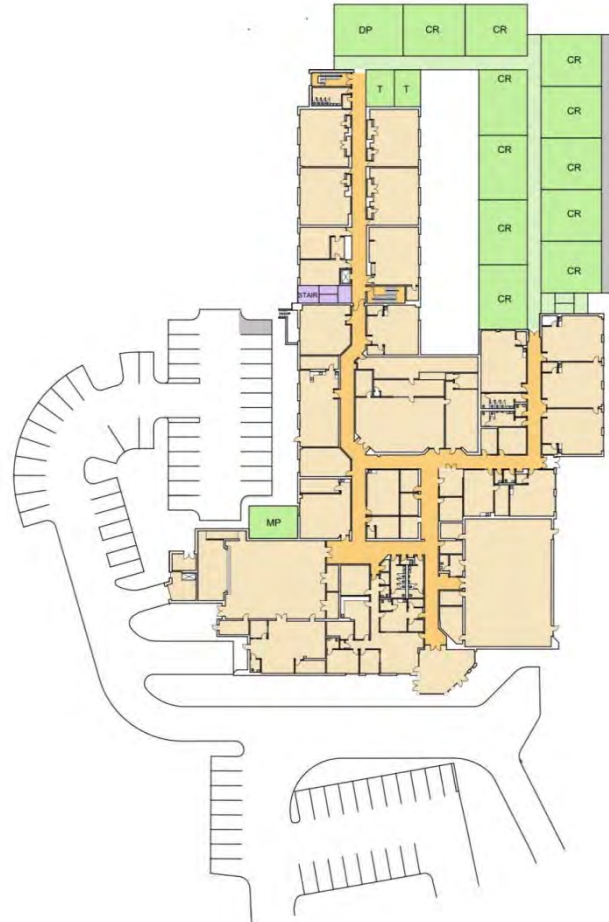
When this project is complete, the following spaces are to be provided.
The capacity will be 637 with a core of 640.

Updated 2-4-2015

Facility	#	Description	Net Sq. Ft.	Total Net Sq. Ft.
Classrooms				
Prekindergarten	3		1300	3900
Kindergarten	6		1300	7800
Standard	11		900	9900
Dual purpose Room	1		1000	1000
Instrumental Music Room	1		450	450
Support Rooms				
Title I Parent Resource Room	1		500	500
Staff Development Area				
Staff Development Office	1		100	100
Reading Specialist Office	1		100	100
Training/Conference Room	1		450	450
Counseling Area				
Counselor's Office	1		250	250
Itinerant Staff Office	1		150	150
Multipurpose Room				
Multipurpose Room (increase existing)	1		500	500
Building Service Facilities				
General Storage	1		250	250
PTA Storage	1		150	150
Total	22			25500



Lower Level



Main Level

Lower Level Addition – 17,250 SF
Main Level Addition – 15,950 SF
Total Addition – 33,200 SF

Stair Renovation – 300 SF

Oak View – Proposed Addition (PreK-5)



Oak View – Proposed Site Plan (PreK-5)



- Currently has Excess Capacity 30
- Currently no Relocatables
- Two Story School
- Small Site (7.5 Acres)
- Paired with Pine Crest ES
- Grades PreK-2
- Original School Built in 1957
- Additions in 1969, 1972, 1989 and 2011
- Design Issues / Constraints
 - Multiple Interior Levels, Ramps
 - On Site Forest

- Current Core Capacity – 640/520**
- Current Program Capacity – 540
- Current Enrollment (2014-15) - 510
- Proposed Core Capacity – 640
- Projected Program Capacity w/ Addition – 648/637*
- Projected Enrollment 2020-21 – 479
- Projected Excess Capacity after Addition – 169/158*

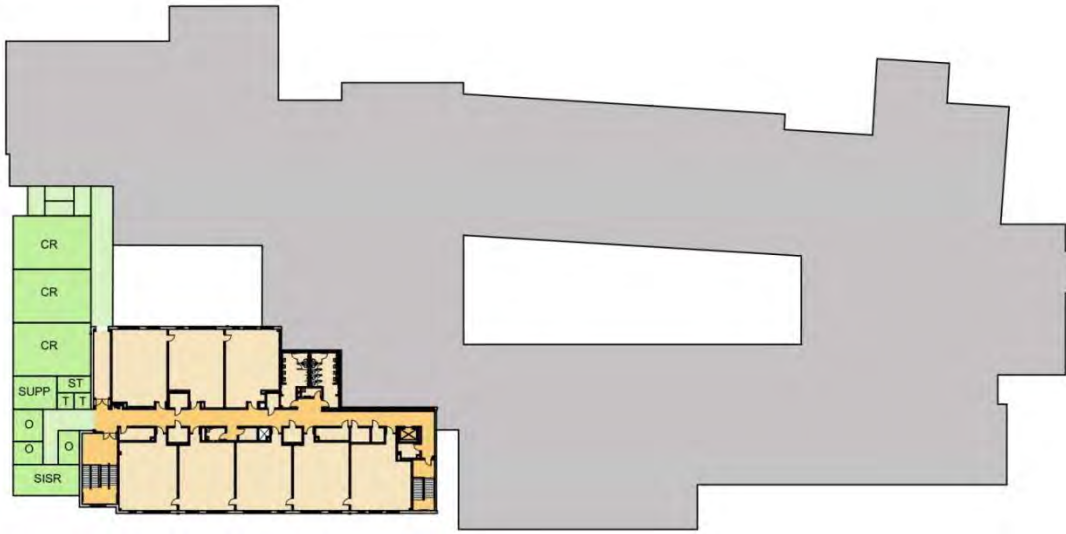
**Capacities Provided for PreK-2 and PreK-5 Options respectively;*

No Addition Required for PreK-5

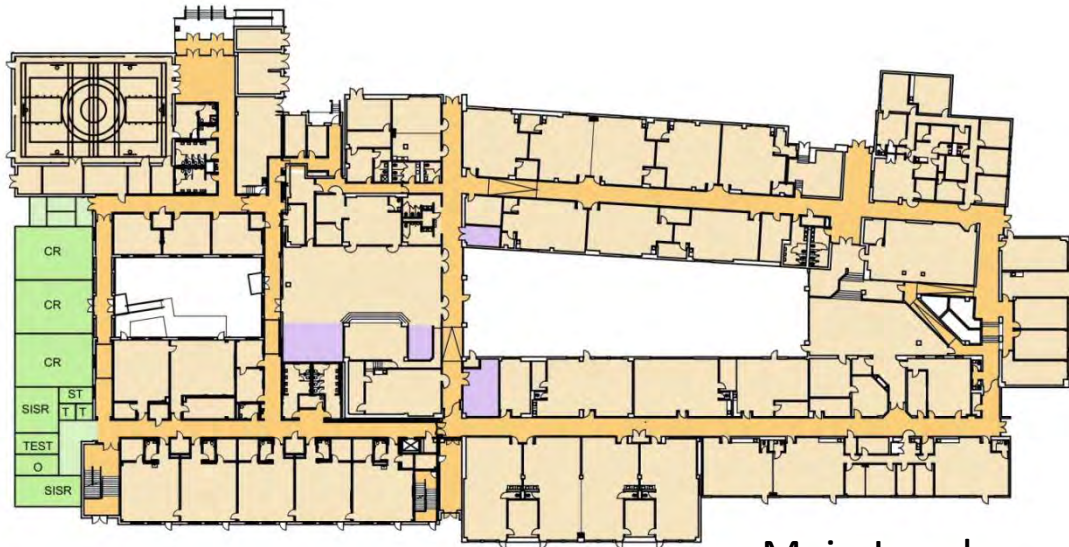
*** Current Capacity Default Classification / Actual Capacity Classification*



Montgomery Knolls - Data



Upper Level



Main Level

Montgomery Knolls Elementary School (Grades pre-K-2) Square Foot Summary

When this project is complete, the following spaces are to be provided:
The capacity will be 648 with a core of 640.

Updated 2-4-2015

Facility	#	Description	Net Sq. Ft.	Total Net Sq. Ft.
Classrooms				
Standard	6		900	5400
Support Rooms				
Small Instructional Support Room	3		450	1350
Testing Room	1		150	150
Support Staff Offices	2		150	300
Counseling Area				
Counselor's Office	1		250	250
Itinerant Staff Office	1		150	150
Multipurpose Room				
Multipurpose Room (increase existing)	1		800	800
Building Service Facilities				
General Storage	1		250	250
PTA Storage	1		150	150
Total	6			8800

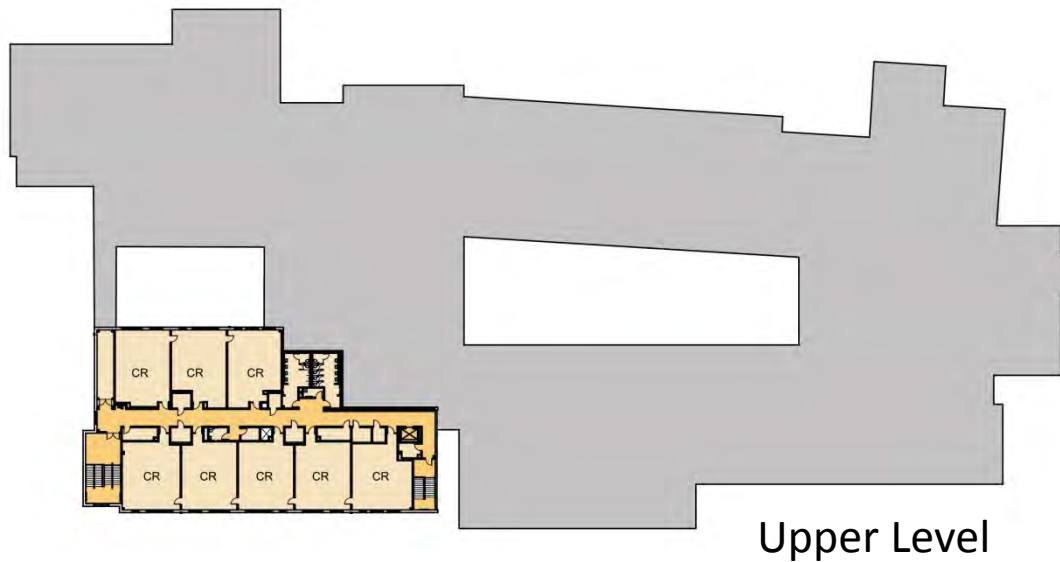
Main Level Addition – 5,100 SF
Upper Level Addition – 5,800 SF
Total Addition – 10,900 SF

Main Level Renovation – 1,200 SF
Upper Level Renovation – 0 SF
Total Renovation SF – 1,200 SF

Montgomery Knolls – Proposed Addition (PreK-2)



Montgomery Knolls – Proposed Site Plan (PreK-2)



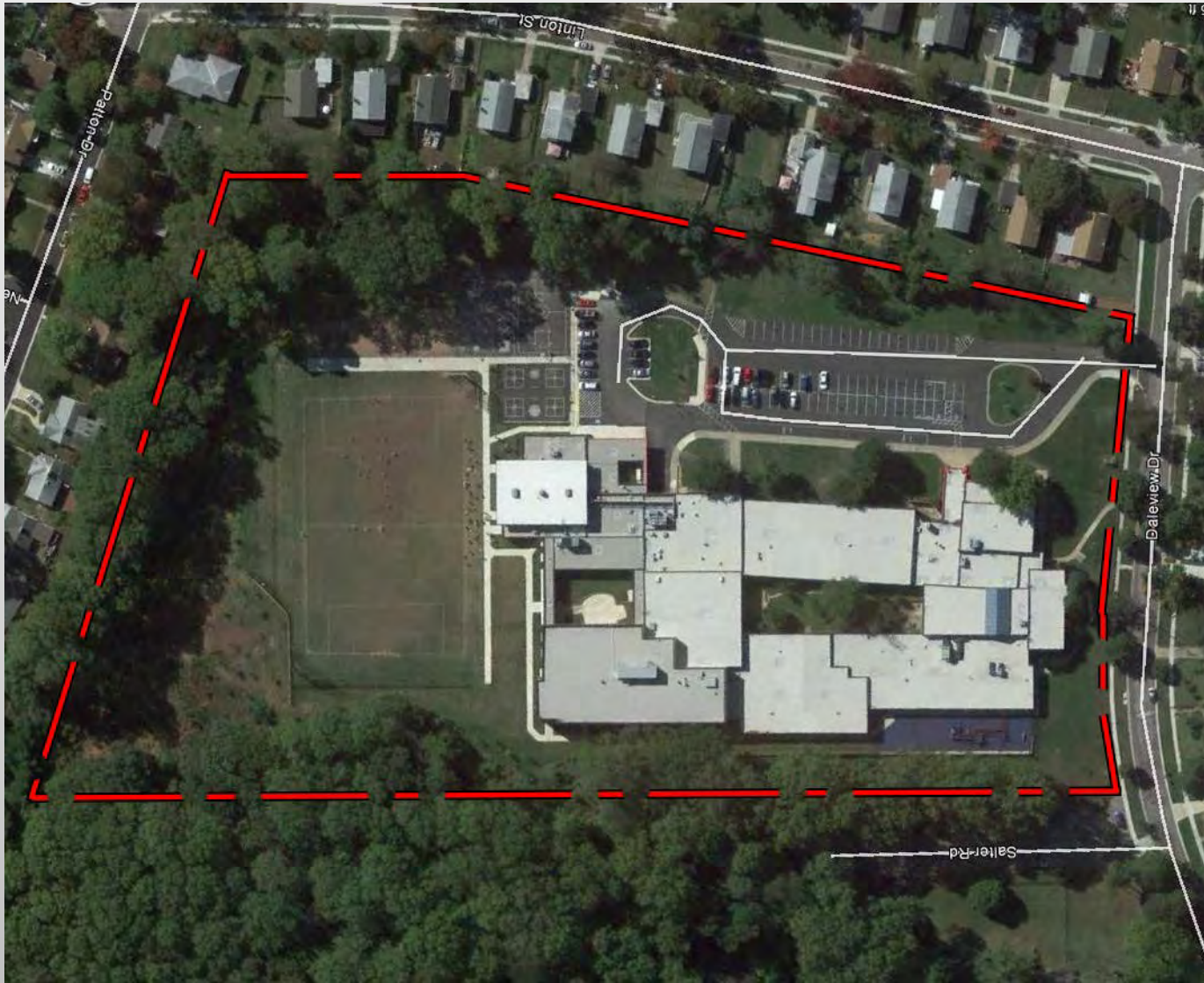
Upper Level

No Addition Required for PreK-5 Program



Main Level

Montgomery Knolls – No Addition Required (PreK-5)



Montgomery Knolls – Site Plan (PreK-5) – No Addition Required



- Current Core Capacity – 640/520**
- Current Program Capacity – 381
- Current Enrollment (2014-15) - 473
- Proposed Core Capacity – 640
- Projected Program Capacity w/ Addition – 657/646*
- Projected Enrollment 2020-21 – 441
- Projected Excess Capacity after Addition – 216/205*

**Capacities Provided for 3-5 and PreK-5 Options respectively*

**** Current Capacity Default Classification / Actual Capacity Classification*

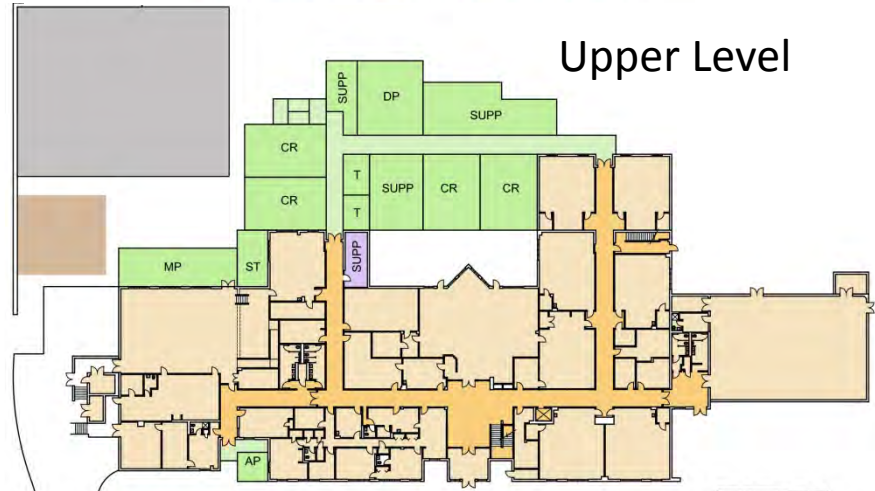
- Currently has Capacity Deficit -92
- Currently 5 Relocatables
- Two Story School
- Small Site (7.0 Acres)
- Paired with Montgomery Knolls ES
- Grades 3-5
- Original School Built in 1975 (only the gym remains)
- Addition in 1992 (the rest of the school)
- Design Issues / Constraints
 - Adjacent Parks
 - School on Property Line



Pine Crest - Data



Upper Level



Main Level

**Pine Crest Elementary School (Grades 3-5)
Square Foot Summary**

When this project is complete, the following spaces are to be provided:
Capacity will be 657 with a 6-10 core.

Updated 2-5-2015

Facility	#	Description	Net Sq. Ft.	Total Net Sq. Ft.
Classrooms				
Grades 1-5	11	Includes 150 s.f. storage	900	9900
Instrumental Music Room	1		450	450
Dual purpose Room	1		1000	1000
Special Education				
Home School Model Support Room	1		300	300
Speech/Language Room	1		250	250
Therapy/Support Room	1		250	250
Instructional Support Rooms				
Small Instructional Support Room	2		450	900
Testing/Conference Room	1		150	150
Support Staff Offices	2		150	300
Multipurpose Room				
Multipurpose Room (enlarge existing)	1		1000	1000
Clear Storage	1		200	200
Administration				
Assistant Principal's Office	1		150	150
Counseling Suite				
Counselor's Office	1		250	250
Itinerant Staff Office	1		150	150
Staff Development Area				
Staff Development Office	1		100	100
Reading Specialist Office	1		100	100
Training/Conference Room	1		450	450
Building Service Facilities				
General Storage	1		250	250
PTA Storage	1		150	150
Total	12			16300

Main Level Addition – 11,800 SF
Upper Level Addition – 10,000 SF
Total Addition – 21,800 SF

Main Level Renovation – 300 SF
Upper Level Renovation – 1,000 SF
Total Renovation – 1,300 SF

Pine Crest – Proposed Addition (3-5)



Pine Crest – Proposed Site Plan (3-5)





Upper Level



Main Level

Pine Crest Elementary School (Grades pre-K-5)
Square Foot Summary

When this project is complete, the following spaces are to be provided:
 Capacity will be 646 with a 640 core.

Updated 2-5-2015

Facility	#	Description	Net Sq. Ft.	Total Net Sq. Ft.
Classrooms				
Kindergarten	6	Includes 250 s.T. storage	1,300	7,800
Grades 1-5	8	Includes 150 s.T. storage	900	7200
Instrumental Music Room	1		450	450
Dual purpose Room	1		1000	1000
Special Education				
Home School Model Support Room	1		300	300
Speech/Language Room	1		250	250
Therapy/Support Room	1		250	250
Instructional Support Rooms				
Small Instructional Support Room	2		450	900
Testing/Conference Room	1		150	150
Support Staff Offices	2		150	300
Multipurpose Room				
Multipurpose Room (enlarge existing)	1		1000	1000
Chair Storage	1		200	200
Administration				
Assistant Principal's Office	1		150	150
Counseling Suite				
Counselor's Office	1		250	250
Itinerant Staff Office	1		150	150
Staff Development Area				
Staff Development Office	1		100	100
Reading Specialist Office	1		100	100
Training/Conference Room	1		450	450
Building Service Facilities				
General Storage	1		250	250
PFA Storage	1		150	150
Total	15			21,400

Main Level Addition – 17,500 SF
Upper Level Addition – 11,100 SF
Total Addition – 28,600 SF

Main Level Renovation – 300 SF
Upper Level Renovation – 1,000 SF
Total Renovation – 1,360 SF

Pine Crest – Proposed Addition (PreK-5)



- Currently has Capacity Deficit **-18**
- Currently 0 Relocatables
- Three Story School
- Small Site (5.9 Acres)
- Paired with Piney Branch ES
- Grades K-2
- Original School Built in 1979
- Addition in 2010
- Design Issues / Constraints
 - No Area on the Site for an Addition

- Current Core Capacity – **640**
- Current Program Capacity – **636**
- Current Enrollment (2014-15) - **654**
- Proposed Core Capacity – **640**
- Projected Program Capacity w/ Addition –
No Addition Proposed
- Projected Enrollment 2020-21 – **602**
- Projected Excess Capacity 2020-21 – **34***

** Capacity Provided for K-2 only*



Takoma Park – Data (K-2)



- Currently has Excess Capacity 84
- Currently 0 Relocatables
- Three Story School
- Very Small Site (2.6 Acres)
- Paired with Takoma Park ES
- Grades 3-5
- Original School Built in 1973
- Design Issues / Constraints
 - No Grade Level Access, Pre-K & K Classrooms are Not Possible
 - No Area on the Site for an Addition

- Current Core Capacity – 740
- Current Program Capacity – 611
- Current Enrollment (2014-15) - 527
- Proposed Core Capacity – 740
- Projected Program Capacity w/ Addition –
No Addition Proposed
- Projected Enrollment 2020-21 – 591
- Projected Excess Capacity 2020-21 – 20*

* Capacity Provided for 3-5 only



Piney Branch – Data (3-5)



- An Addition can be constructed at 10 out of the 12 schools
- Not all 10 schools are currently overcrowded
- If all 10 school additions are constructed, there will be sufficient capacity to accommodate all students in the lower portion of the Downcounty Consortium
- Boundary changes will be necessary in order to equalize capacity and enrollments
- If not all additions are constructed, a new school might need to be constructed

Conclusions

- Information on the capacity studies will be posted at the following web location as materials become available:

<http://www.montgomeryschoolsmd.org/departments/construction/studies/dccesstudy.shtm>