



WOODLIN ELEMENTARY SCHOOL REPLACEMENT MONTGOMERY COUNTY PUBLIC SCHOOLS

PRESENTATION SEPTEMBER 21, 2021

CONTENT WILL BE AVAILABLE SEPTEMBER 28, 2021

WEBSITE:

[HTTPS://WWW.MONTGOMERYSCHOOLSMD.ORG/DEPARTMENTS/FACILITIES/CONSTRUCTION/PROJECT/WOODLINES.ASPX](https://www.montgomeryschoolsmd.org/departments/facilities/construction/project/woodlines.aspx)

PROJECT CONTACT: KENNETH FUTCH

PROJECT MANAGER

MCPS – DIVISION OF CONSTRUCTION

EMAIL: KENNETH_R_FUTCH@MCPSMD.ORG

OFFICE: (240) 314 – 1000

DIRECT: (240) 314 – 1015

MEETING MANNERS

1. PLEASE MUTE YOUR MICROPHONE SO THAT ALL CAN HEAR.
2. WE ENCOURAGE FEEDBACK. PLEASE ENTER QUESTIONS INTO CHAT AT ANY TIME AND YOUR QUESTION WILL BE ADDRESSED AT SPECIFIC BREAKS THROUGHOUT THE PRESENTATION.
3. PLEASE NOTE THAT THE TEXT IN THE CHAT WILL BE COPIED FOR DOCUMENTATION OF INPUT.
4. IF YOU AREN'T ABLE TO USE THE CHAT OR CAN'T ACCESS IT, YOU WILL HAVE THE OPPORTUNITY TO UNMUTE AT A DESIGNATED TIME IN THE PRESENTATION.
5. PLEASE CONTACT KEN FUTCH WITH MCPS WITH ADDITIONAL COMMENTS OR QUESTIONS.

AGENDA

1

TEAM INTRODUCTIONS

2

PROGRAM

3

SCHEDULE

4

LANDSCAPE

5

ARCHITECTURE

TEAM INTRODUCTIONS

- » MONTGOMERY COUNTY PUBLIC SCHOOLS
- » WOODLIN ELEMENTARY SCHOOL PRINCIPAL & STAFF
- » PTA
- » DESIGN COLLECTIVE

PROGRAM

- » REPLACEMENT SCHOOL : 98,000 GSF
- » CAPACITY: 653 STUDENTS (MASTER PLANNED FOR 745) with a 740 core.
- » SITE AREA: 10.4 ACRES / 6.5 USABLE
- » PARKING : 100 SPACES
- » SITE CIRCULATION : NEW BUS LOOP ON-SITE, EXPANDED PARKING LOT, SEPARATE PARENT / DAY CARE DROP-OFF



PROJECT SCHEDULE

- » WOODLIN ES & CHILDCARE CENTER VACATE EXISTING BUILDING DECEMBER 23, 2021 - JANUARY 2, 2022
- » WOODLIN ELEMENTARY SCHOOL OPENS AT GROSVENOR JANUARY 3, 2022
- » START OF CONSTRUCTION JANUARY 2022
- » PROJECT SUBSTANTIAL COMPLETION JULY 1, 2023
- » MCPS MOVE INTO NEW SCHOOL AUGUST 2023
- » PRE SERVICE DAY, THE TEACHERS RETURN AUGUST 23, 2023
- » FIRST DAY OF SCHOOL FOR STUDENTS. AUGUST 30, 2023

PHASES

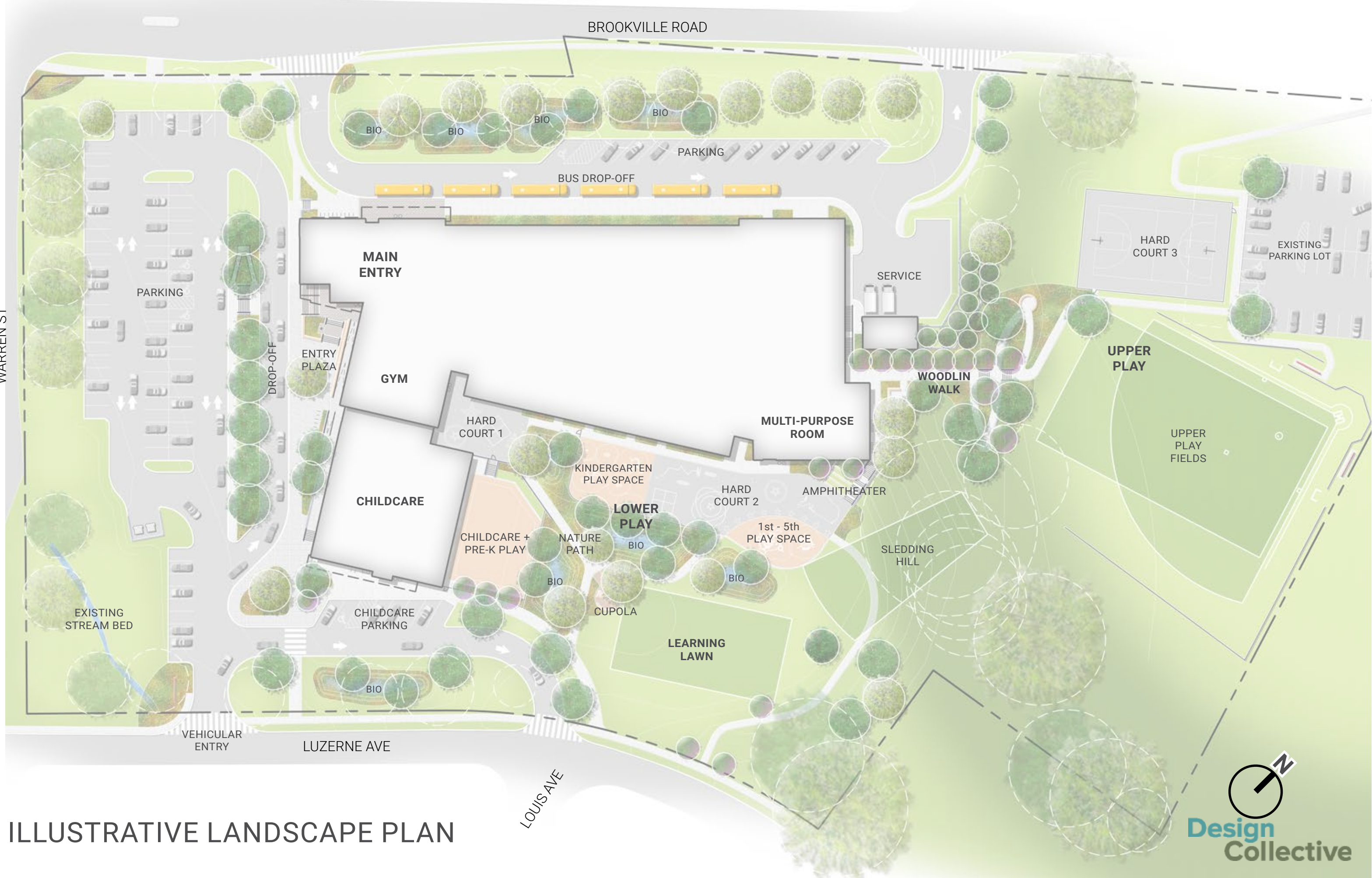


EXISTING SITE DIAGRAM



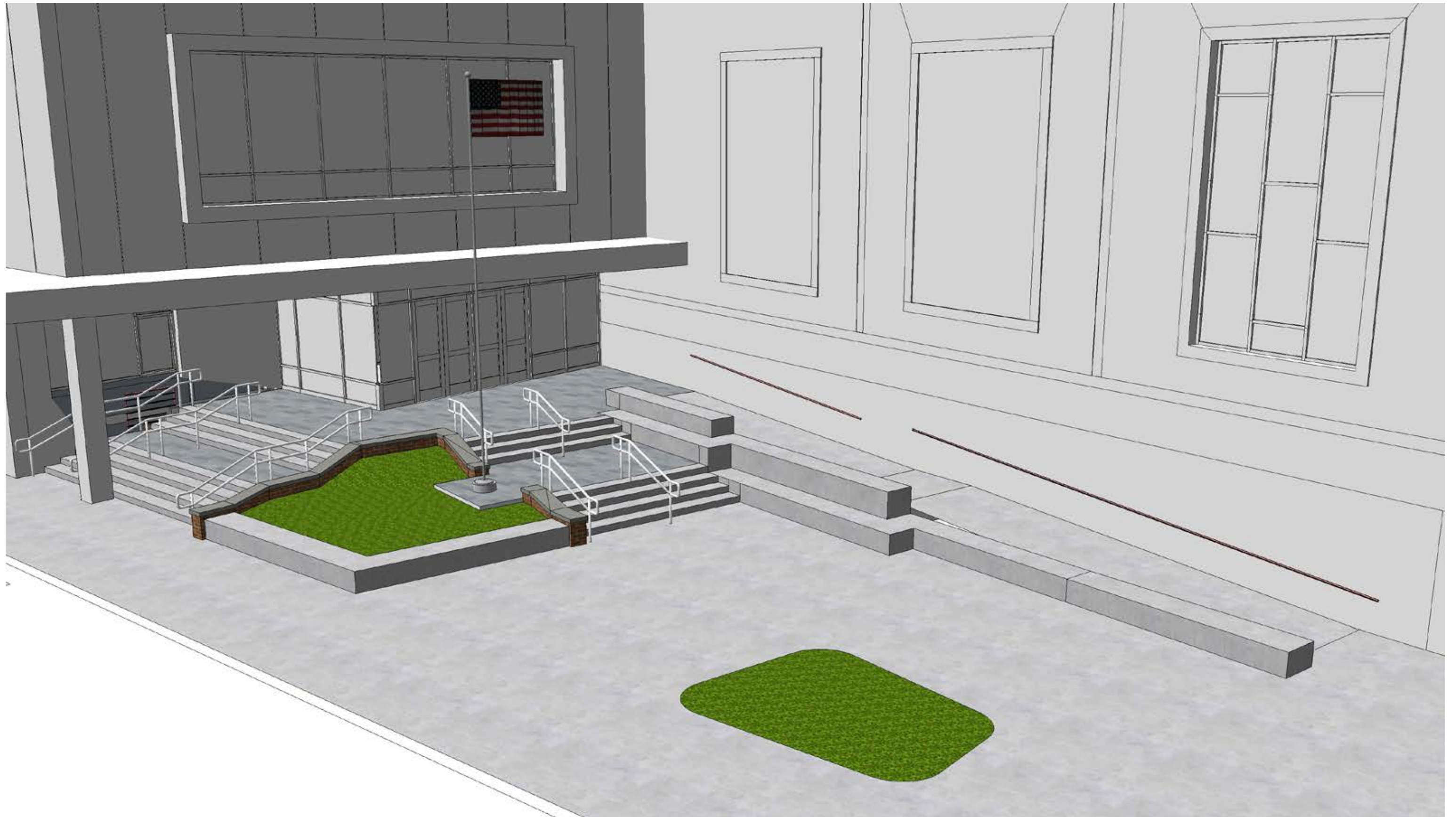
- » Preference for car traffic to access the building from Luzerne Avenue
- » Buses and service access can use Brookville Road or Warren Street to reduce traffic on Luzerne Avenue
- » Traffic study will need to be conducted when school is back in session

LANDSCAPE

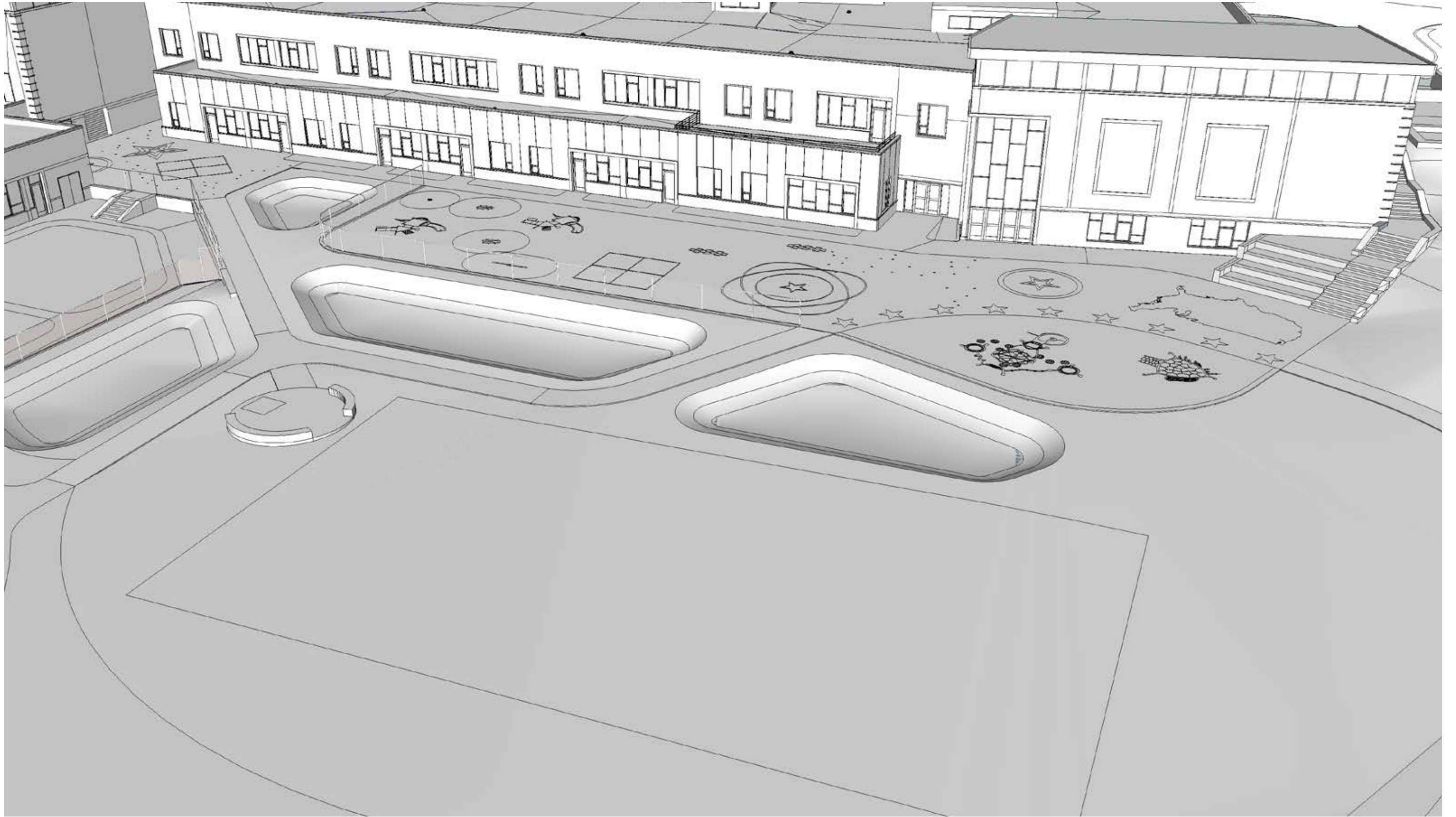


ILLUSTRATIVE LANDSCAPE PLAN





LANDSCAPE PERSPECTIVE - ENTRANCE



LANDSCAPE PERSPECTIVE - LOWER PLAY + LEARNING LAWN

ARCHITECTURE



ARCHITECTURE - WOODLIN SOUTH ELEVATION



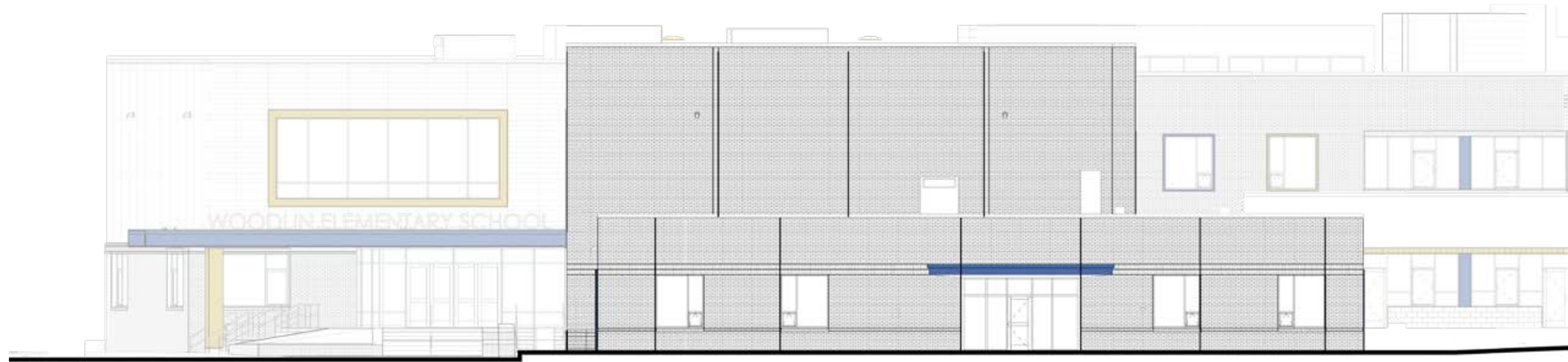
ARCHITECTURE - ENTRY & CLASSROOMS



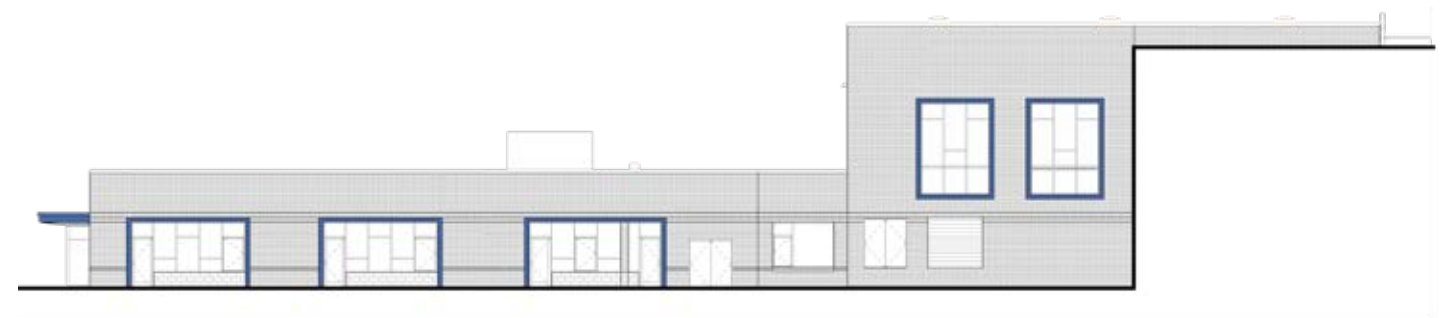
ARCHITECTURE - NORTH ELEVATION



ARCHITECTURE - EAST & WEST ELEVATION



ARCHITECTURE - CHILDCARE SOUTH ELEVATION



ARCHITECTURE - WEST & EAST ELEVATION



ARCHITECTURE - SOUTHWEST



ARCHITECTURE - SOUTHEAST



ARCHITECTURE - NORTHWEST



ARCHITECTURE - NORTHEAST

WOODLIN ELEMENTARY SCHOOL

CONTENT WILL BE AVAILABLE SEPTEMBER 28, 2021

WEBSITE:

[HTTPS://WWW.MONTGOMERYSCHOOLSMD.ORG/DEPARTMENTS/FACILITIES/CONSTRUCTION/PROJECT/WOODLINES.ASPX](https://www.montgomeryschoolsmd.org/departments/facilities/construction/project/woodlines.aspx)

PROJECT CONTACT: KENNETH FUTCH

PROJECT MANAGER

MCPS – DIVISION OF CONSTRUCTION

EMAIL: KENNETH_R_FUTCH@MCPSMD.ORG

OFFICE: (240) 314 – 1000

DIRECT: (240) 314 – 1015