



Montgomery County Public Schools

Crown High School

Gaithersburg, Maryland

June 21, 2023



Agenda

- **Project Overview**
- **Location / Site Plan**
- **Building Perspectives**
- **Parking**
- **Forest Conservation Amendment**
- **Retaining Wall Design**



Project Overview

- **Disturbed land area is 31.7 acres**
- **Building is 358,009 sf**
- **Student capacity is 2,219 with a core of 2,700**
- **Substantial completion is August 2026**



Location Plan



Proposed Site Plan



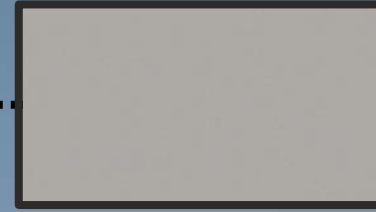
Exterior Views



Materials



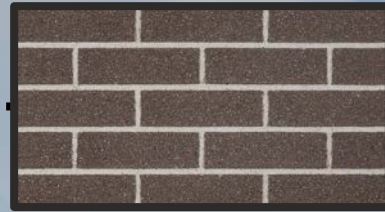
MP4: Metal Panel Infill
Arcadia Green



MP3: Metal Panel
ACM | Champagne



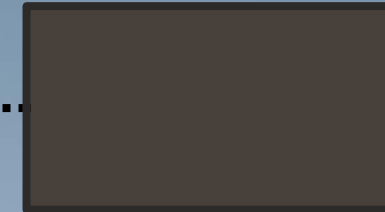
MP1: Metal Panel
Single Skin w/Pattern
Parchment



BK2: Brick
Dark | Field Grey Velour

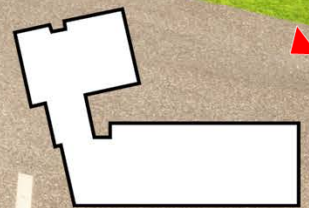


BK1: Brick
Light | Greystone Velour

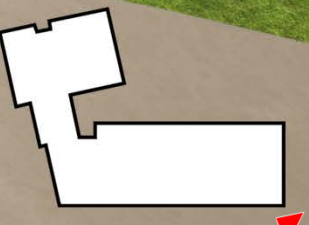


MP2: Metal Panel
Single Skin (Corrugated)
Spartan Bronze











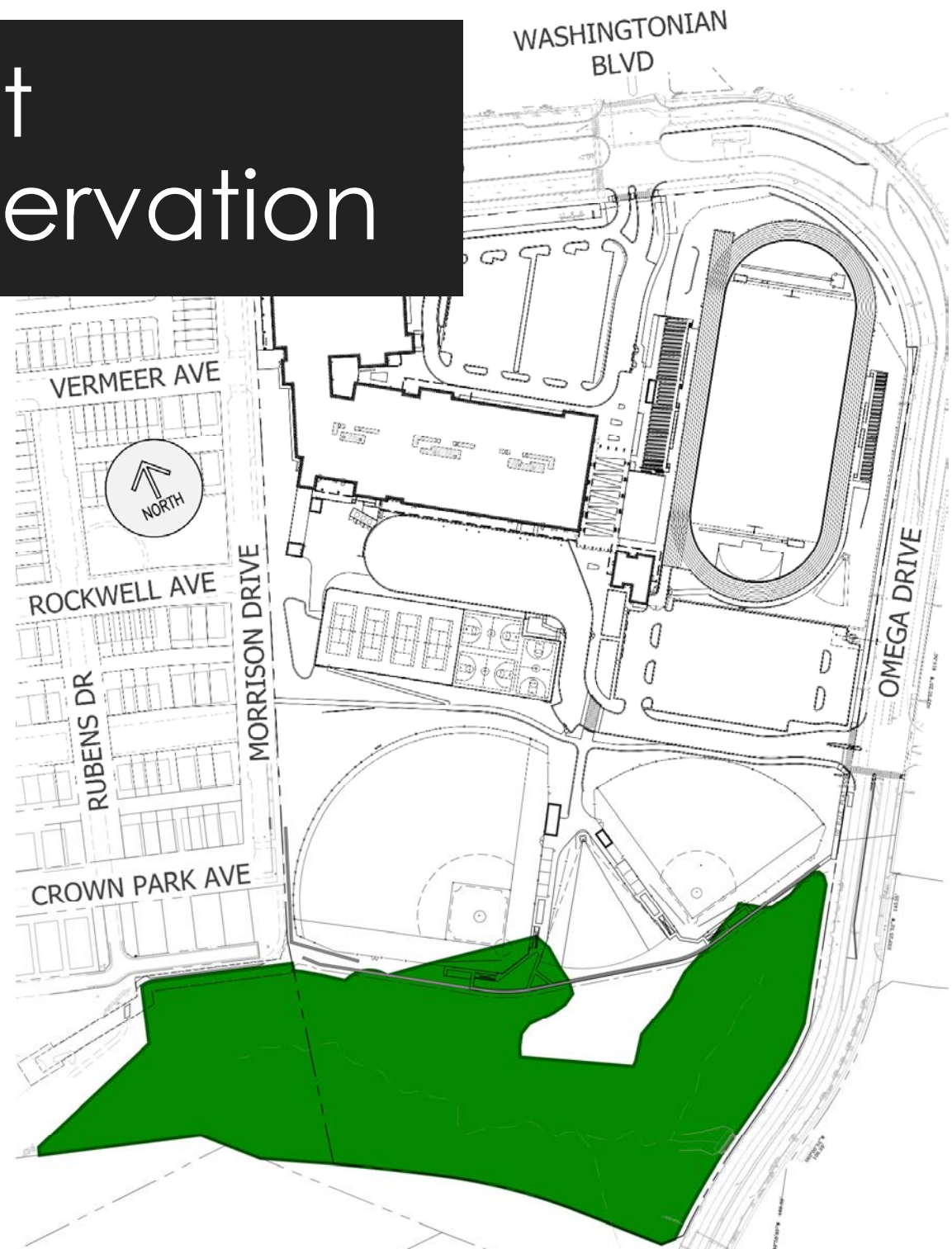




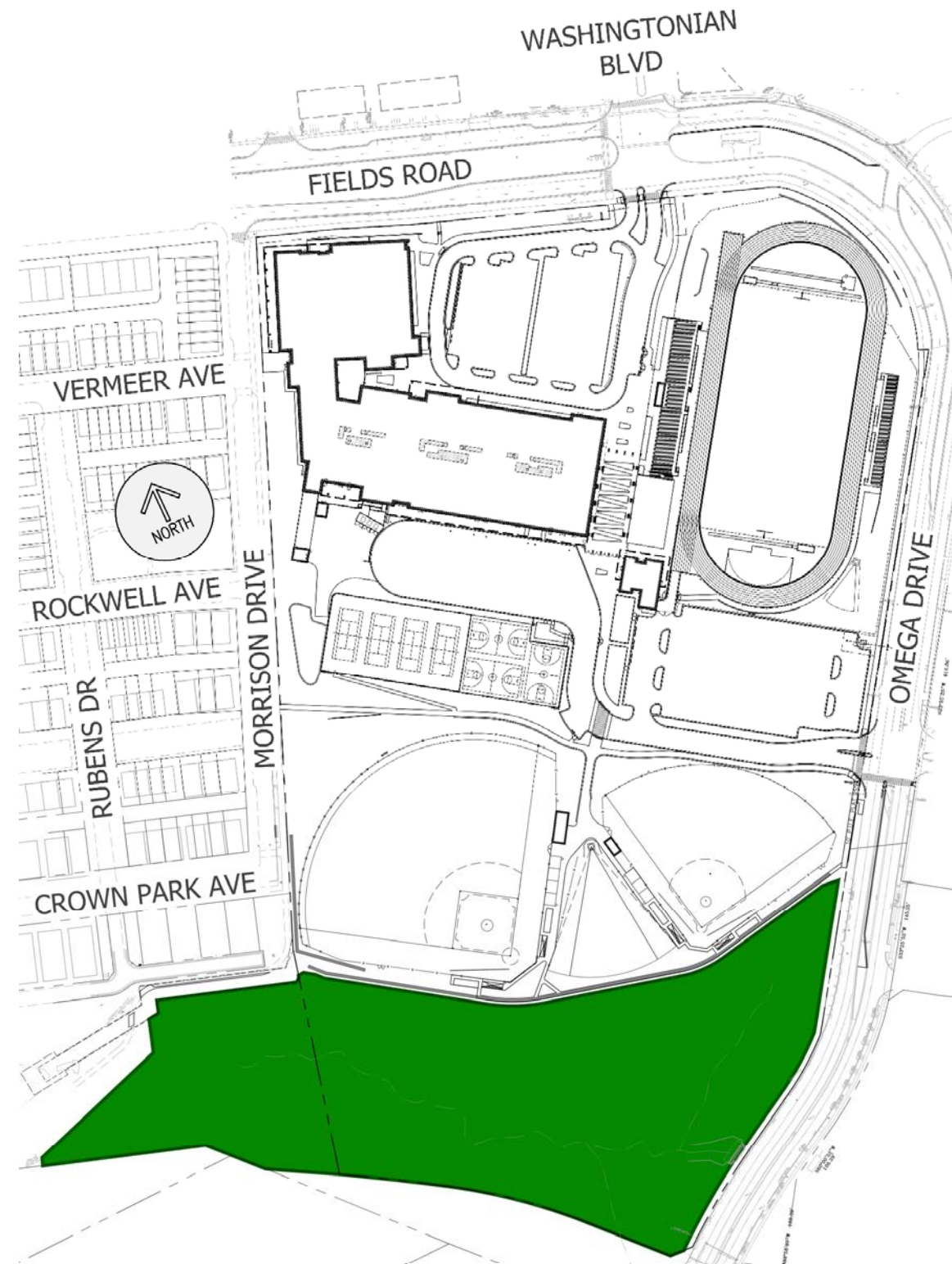
Parking



Forest Conservation



Previously Approved with Crown Neighborhood 3



Amended

Retaining Walls



Big Block Retaining Wall



Landscape Plan

