

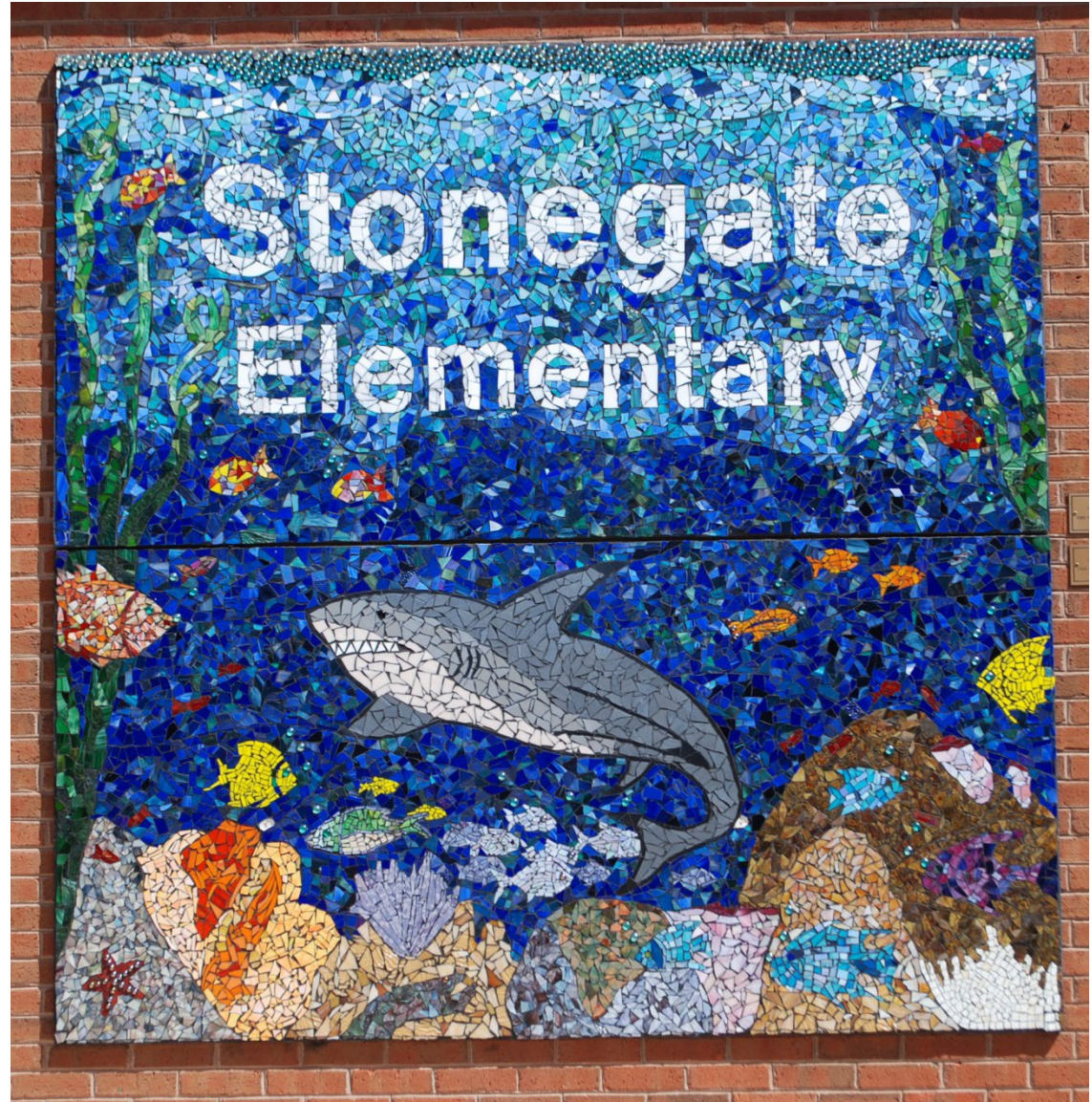
## MONTGOMERY COUNTY PUBLIC SCHOOLS



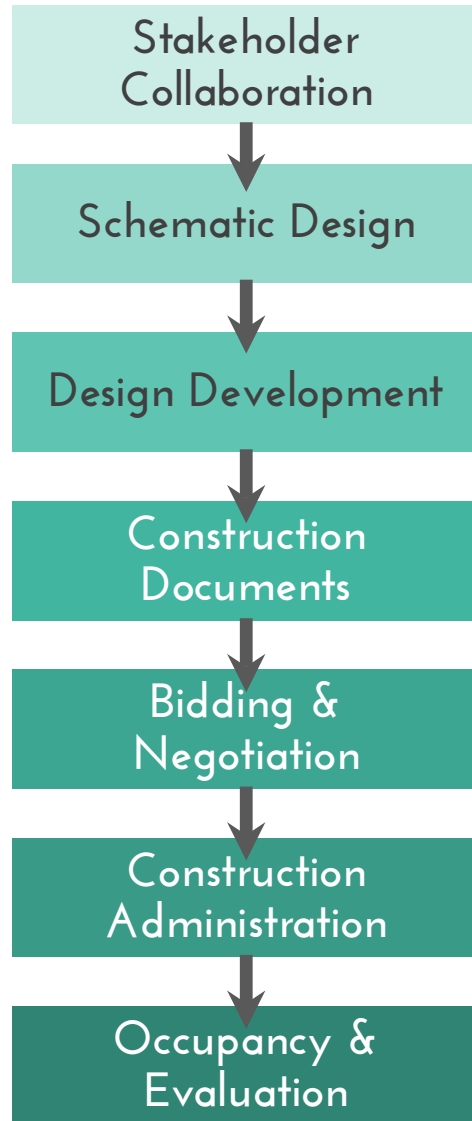
# AGENDA

## Stonegate Elementary School

- Introductions
- Design Process
- Schedule
- Information Gathering
  - Educational Specification
  - Project Specific Goals
- Review Work Sessions
  - Existing Site Conditions
  - Approaches
  - Preferences
  - Comments
- Stonegate Concept
  - Site Plan
  - Building Design
  - Comments



## SEI's Stakeholder Oriented Design Process



- Objective is to satisfy ALL stakeholders
  - Primary Users (students, parents, teachers, staff)
  - Community Users
  - Neighboring residents and businesses
  - Community groups & associations
  - Curriculum Directors
  - MCPS Planning Staff
  - MCPS Facilities Staff
  - MCPS Maintenance Staff
  - MCPS Construction Staff
  - Board of Education
  - Regulating agencies (NFPA / IBC / Environmental)
  - Government Agencies
  - Funding Agencies
- Lead the stakeholders by
  - Offering appropriate compromises
  - Framing the pertinent questions
  - Honestly present the causes and effects of all decisions
  - Offering unbiased approaches
  - Will achieve a balance that best represents the collective needs of the stakeholders
- SEI does not subscribe to a single design philosophy to apply to all our buildings; rather the specific quality of an SEI project is that it truly expresses the result of it's stakeholder driven process

## Stonegate Elementary School

### Schematic Design Phase

Community Work Session #1

September 29, 2020 @ 6:30 pm

Community Work Session #2

October 21, 2020 @ 4:30 pm

Stonegate PTA meeting

December 1, 2020 @ 6:30 pm

SD to MCPS Board of Education

January 2021

MNCPPC Concept Plan Review (30% Design)

January 2021

State of MD IAC SD Submission

January 2021

### Design Development Phase

January 2020 – May 2021

Quarter Scale Reviews

February – March 2021

MNCPPC Mandatory Referral

March 2021

### Construction Document Phase

June 2021 – January 2022

Submit Building Permit to DPS

October 2021

### Bidding and Negotiation Phase (multi-stage)

September 2021 - February 2022

Demolition start

January 2022

### Construction Phase

March 2022– July 2023

## Space & Area Summary

Facility	#	Description	Net Sq.	Total Net
<b>Classrooms</b>				
Prekindergarten	1		1300	<b>1300</b>
Kindergarten	5		1300	<b>6500</b>
Standard	19		900	<b>17100</b>
Special Education (LFI)	3		900	<b>2700</b>
<b>Art</b>				
Art	1		1100	<b>1100</b>
<b>Music</b>				
Music	1		1050	<b>1050</b>
Instrumental Music Room	1		450	<b>450</b>
Dual purpose Room	1		1000	<b>1000</b>
<b>Support Rooms</b>				
Large Instructional Support Room	1		600	<b>1200</b>
Small Instructional Support Room	3		450	<b>900</b>
Speech/Language Room	1		250	<b>250</b>
Personal Care Room (LFI)	3	2shared between LFI rooms, 1 for HSM	100	<b>300</b>
Special Education Conference Room	1		300	<b>300</b>
Therapy/Support Room	1		250	<b>250</b>
Testing/Conference Room	1		140	<b>140</b>
Instructional Data Assistant Office	1		140	<b>140</b>
Support Staff Offices	2		140	<b>280</b>
<b>Library Media Center</b>				
Learning Environment	1		2100	<b>2100</b>
Work and Production Area	1		500	<b>500</b>
Media Support/Storage Room	1		250	<b>250</b>
General Storage	1		200	<b>200</b>
Telecommunication Closet	1		150	<b>150</b>
Telecommunication Closet	3		50	<b>150</b>
<b>Physical Education</b>				
Gymnasium	1		3700	<b>3700</b>
Office	1		140	<b>140</b>
Storage	1		250	<b>250</b>
Storage	2		100	<b>200</b>
Outside Storage	1		140	<b>140</b>

Facility	#	Description	Net Sq.	Total Net
<b>Multipurpose Room</b>				
Multipurpose Room	1		3700	<b>3700</b>
Chair Storage	1		200	<b>200</b>
Table Storage	1		200	<b>200</b>
Platform	1		450	<b>450</b>
<b>Before/After Care</b>				
Before/After Care Prep Area	1		12	<b>12</b>
Before/After Care	1		100	<b>100</b>
<b>Kitchen</b>				
Serving Area	1		300	<b>300</b>
Walk-in Cooler/Freezer	1		155	<b>155</b>
Dry Storage	1		192	<b>192</b>
Office	1		100	<b>100</b>
Toilet Room	1		70	<b>70</b>
Preparation Area	1		555	<b>555</b>
<b>Administration</b>				
General Office	1		500	<b>500</b>
Workroom	1		340	<b>340</b>
Principal's Office	1		250	<b>250</b>
Assistant Principal's Office	1		140	<b>140</b>
Conference Room	1		300	<b>300</b>
Telephone Booth	1		50	<b>50</b>
Storage	1		100	<b>100</b>
Record Room	1		100	<b>100</b>
Toilet Room	1		50	<b>50</b>
2nd Floor Workroom	1		75	<b>75</b>
<b>Counseling Suite</b>				
Counselor's Office	1		250	<b>250</b>
Itinerant Staff Office	1		140	<b>140</b>
<b>Staff Development Area</b>				
Staff Development Office	1		100	<b>100</b>
Reading Specialist Office	1		100	<b>100</b>
Training/Conference	1		400	<b>400</b>

Facility	#	Description	Net Sq.	Total Net
Staff Lounge	1		700	<b>700</b>
<b>Health Services Suite</b>				
Waiting Area	1		100	<b>100</b>
Treatment/Medication	1		120	<b>120</b>
Office/Health Assessment Room	1		100	<b>100</b>
Health Assessment/Isolation	1		100	<b>100</b>
Rest Area	1		200	<b>200</b>
Toilet Room	1		50	<b>50</b>
Storage Room	1		40	<b>40</b>
<b>Building Service Facilities</b>				
Building Services Office	1		140	<b>140</b>
Locker/Shower Area	1		150	<b>150</b>
Compactor/Trash Room	1		150	<b>150</b>
General Storage and Receiving	1		550	<b>550</b>
General Storage	3		250	<b>750</b>
Building Services Outdoor Storage	1		175	<b>175</b>
Book Storage	1		200	<b>200</b>
PTA Storage	1		100	<b>100</b>

<b>Total</b>	34			<b>55,294</b>
<b>Master planned Spaces</b>				
Standard Classrooms	6		900	<b>5400</b>

## Project Understanding

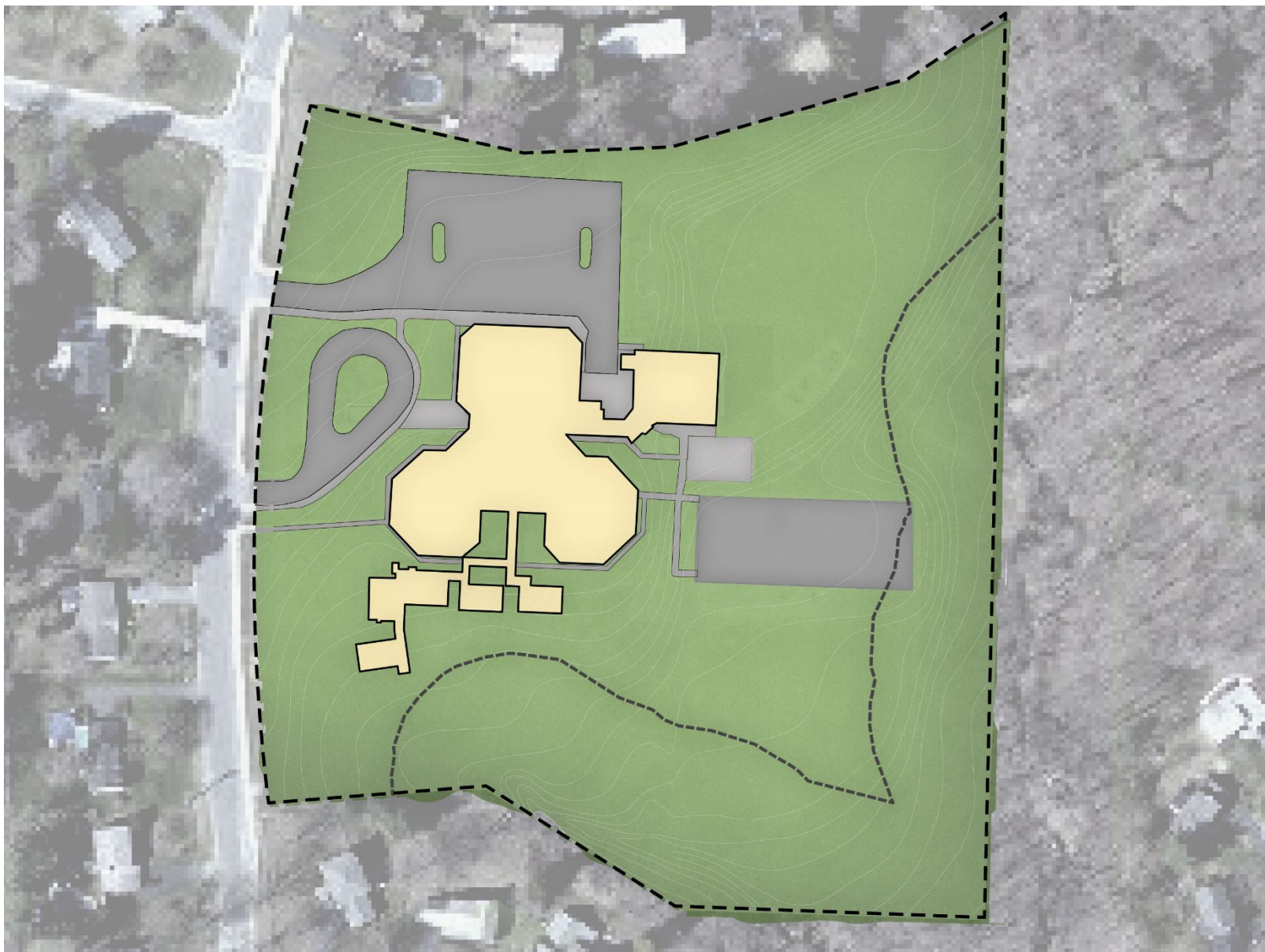
- **58,914 NSF (83,000 GSF)**
  - 3,600 NSF 6 Classroom Master planned Addition
  - 574 Student Capacity with 740 Core Capacity
- **Learning Spaces**
  - 1 Prekindergarten
  - 5 Kindergarten
  - 19 Standard Grades 1-5
  - 3 Learning for Independence
  - 1 Art
  - 1 Music
  - 1 Instrumental Music
  - 1 Dual Purpose
- **Site Challenges**
  - Limited area: 10.27 acres
  - Environmental protections
    - Stream buffer
    - Forestation areas
  - Topography – 40' diagonal drop
- **Project Specific Goals**
  - **Safety, Security & Supervision**
    - Supervise visitor entry, bus/drop off and play areas
    - Interior lines of site
    - Distinction between public/private spaces and enhanced security
  - **Safe Access**
    - Separate bus loop, drop off/pick up lane, and pedestrian access
    - NO CROSSING
  - **Vertical program adjacencies**
    - Special attention to accessibility for LFI and early childhood
    - Formal connection between cafeteria and play areas
  - **State of the art Heating Ventilation and Air Condition (HVAC)**
    - Independent fresh air system for air quality
    - Enhanced MERV 13 filtration
  - Adequate and appropriately distributed toilet facilities
  - **Holistic project**
    - **21<sup>st</sup> Century Learning Environments**
      - Spaces for all learner needs
      - Small group collaboration spaces
    - Building massing & site development respectful of community scale and needs
    - Sustainability – Green Globes (2 globe rating)



SMOLEN • EMR  
• ILKOVITCH  
ARCHITECTS

# STONEGATE ELEMENTARY

## Existing Site Plan





SMOLEN • EMR  
• ILKOVITCH  
ARCHITECTS

# STONEGATE ELEMENTARY

## Existing Site Constraints





## Diagram - Buildable Area

- **Salient Features**

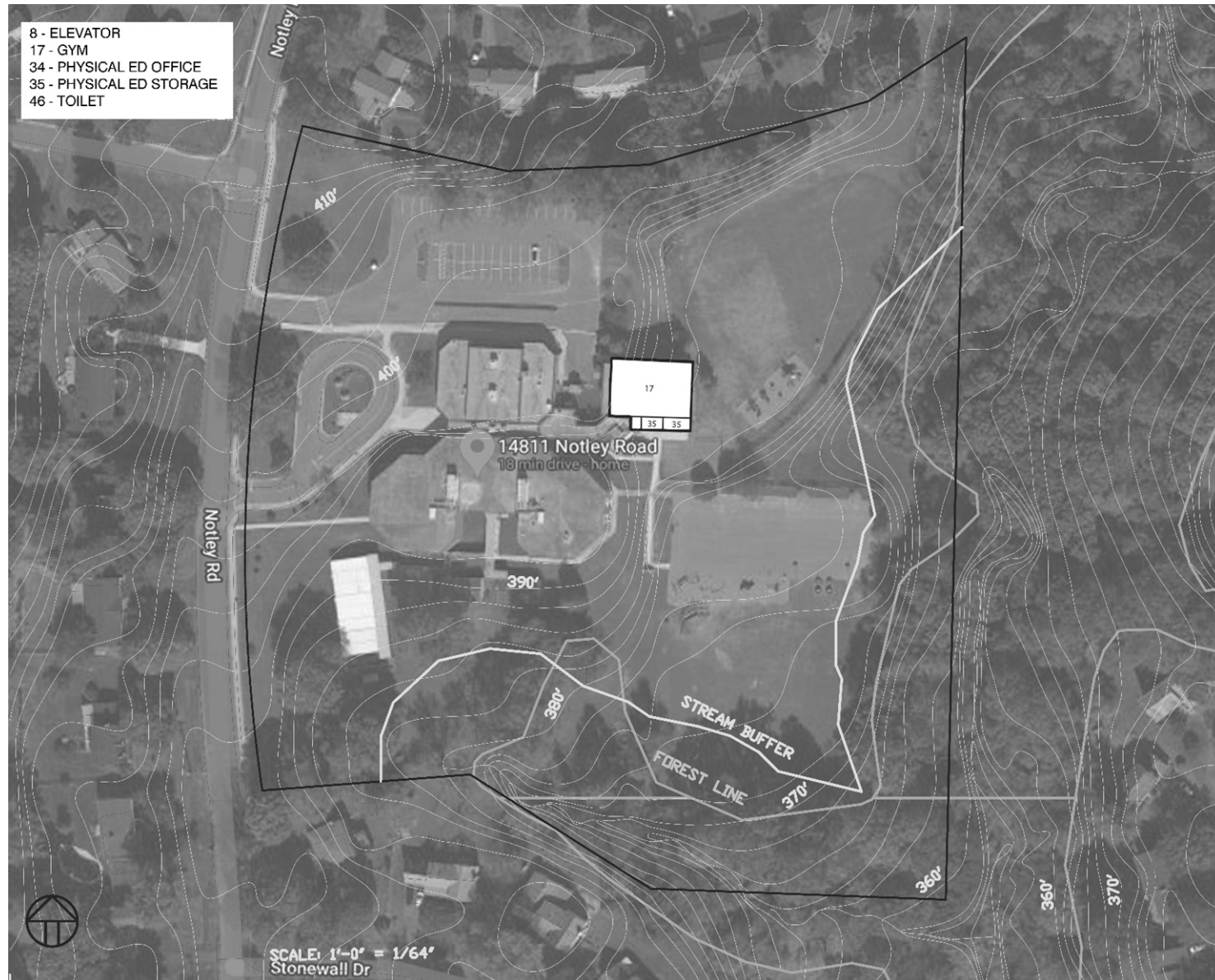
- Total area of property cannot be used due to zoning, setbacks, and buffers
- Building Setbacks
  - Front Yard Setback: 40'
  - Side Yard Setback: 12'
  - Rear Yard Setback: 30'

- **Resulting Buildable Area**

- Property Area: 10.27 acres
- Buildable Area: 6 acres



## Existing 2008 Gymnasium





SMOLEN • EMR  
• ILKOVITCH  
ARCHITECTS

# STONEGATE ELEMENTARY

## Fly Through



# STONEGATE ELEMENTARY

## Fly Through

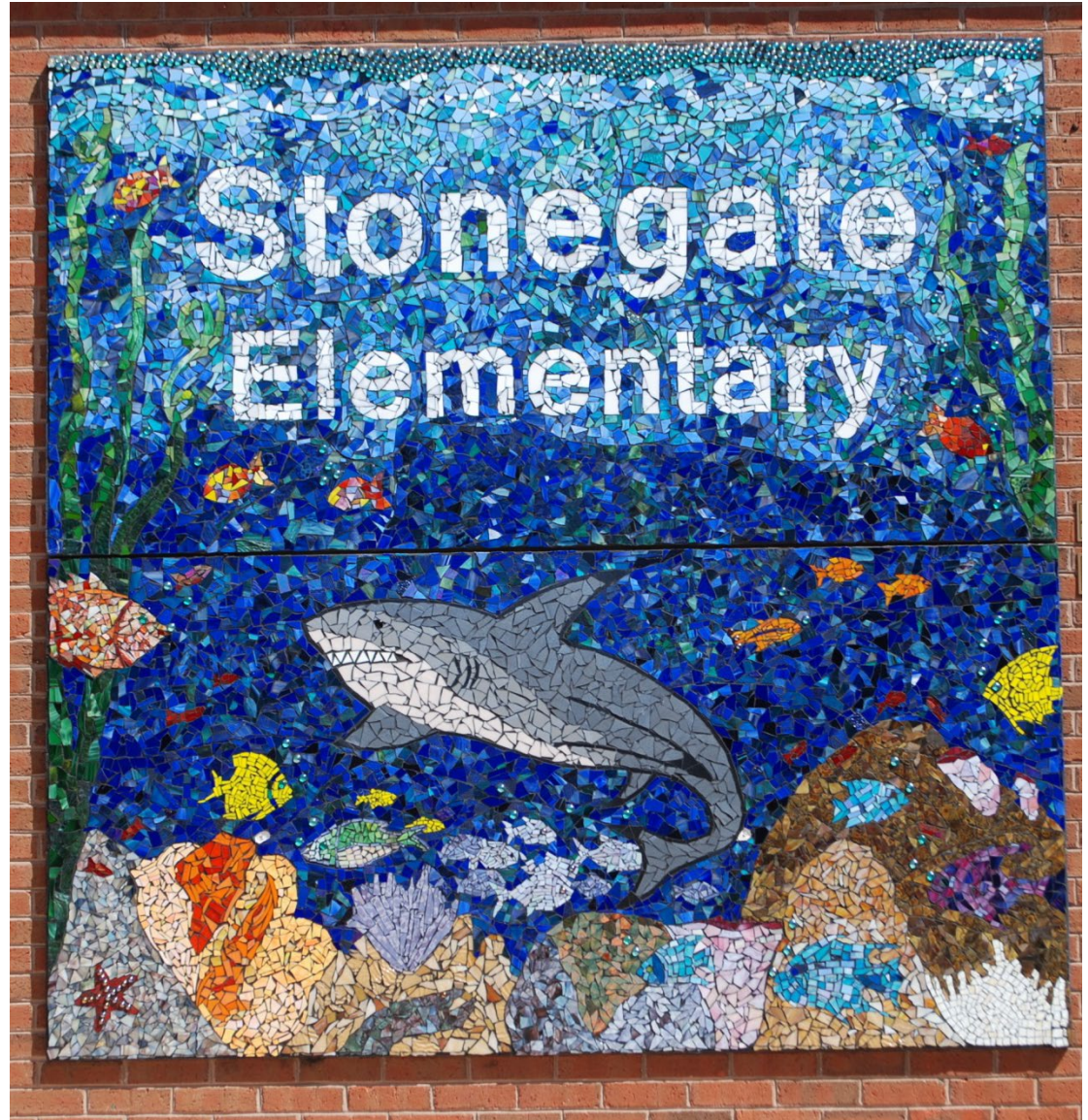
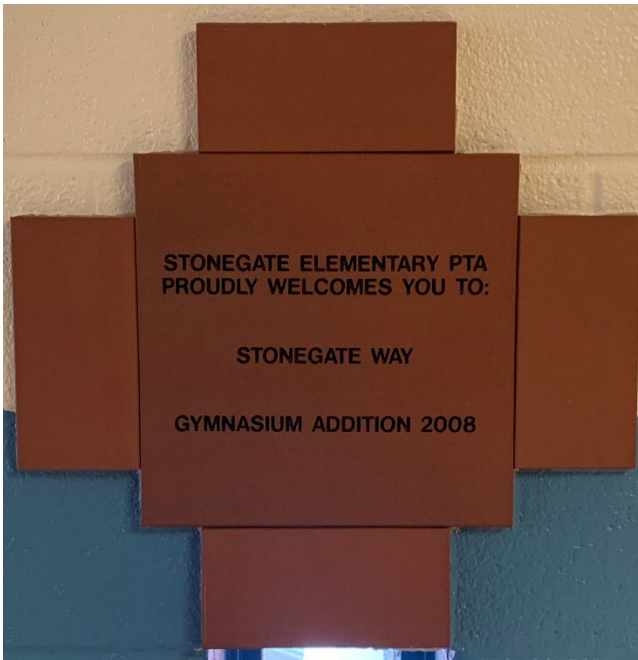




SMOLEN • EMR  
• ILKOVITCH  
ARCHITECTS

# EXISTING ARTWORK

Stonegate Elementary School



## Stonegate Elementary School

### Schematic Design Phase

Community Work Session #1

September 29, 2020 @ 6:30 pm

Community Work Session #2

October 21, 2020 @ 4:30 pm

Stonegate PTA meeting

December 1, 2020 @ 6:30 pm

SD to MCPS Board of Education

January 2021

MNCPPC Concept Plan Review (30% Design)

January 2021

State of MD IAC SD Submission

January 2021

### Design Development Phase

Quarter Scale Reviews

January 2020 – May 2021

February – March 2021

MNCPPC Mandatory Referral

March 2021

### Construction Document Phase

Submit Building Permit to DPS

June 2021 – January 2022

October 2021

### Bidding and Negotiation Phase (multi-stage)

September 2021 - February 2022

Demolition start

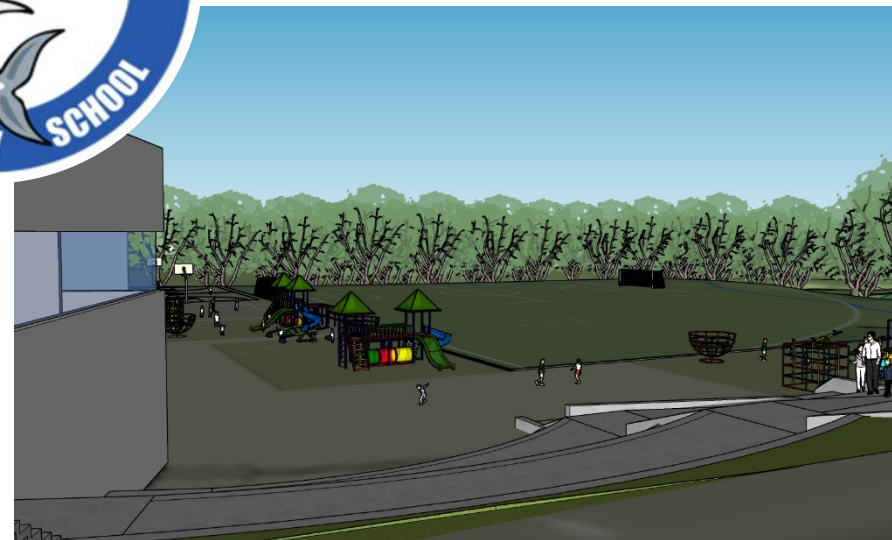
January 2022

### Construction Phase

March 2022– July 2023

# THANK YOU!

## Stonegate Elementary School





SMOLEN • EMR  
ILKOVITCH  
ARCHITECTS

# ZOOM MEETING PROTOCOLS

## Stonegate Elementary School

1. Sign in through the chat function. Please provide the following information:
  - Full Name
  - Email address
  - Affiliation  
(Staff/Parents/Community)
2. Please mute your microphone so that all can hear.
3. Submit questions through the chat function. We will pause periodically to address them. Please note that the text in the chat will be copied for documentation of input.
4. If you aren't able to use the chat or can't access it, you will have the opportunity to unmute at the end of the presentation.
5. Please contact Shiho Shibasaki, Project Manager, MCPS Division of Design and Construction, with additional comments or questions.

