

The Judy Center Early Learning Hub at
Rolling Terrace Elementary School
Spring 2025

Child Care Providers' Professional Development Series
Abilities Network Project ACT

Training #1

"I Am Full of Emotions"

Why Social and Emotional Skills and Emergent Literacy are Important

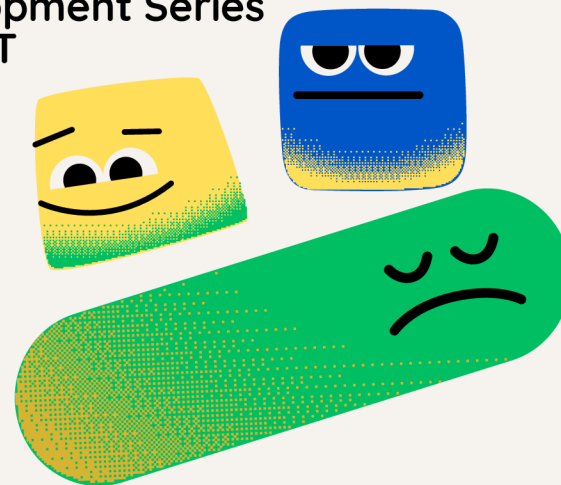
This workshop discusses the importance between emergent literacy, social emotional skills, and self-regulation skills. Participants will gain strategies to use in their programs that encourage their children to use positive behaviors and express themselves. This training will be offered in English, only.

Core of Knowledge Area: Child Development - 2 hour(s)

Thursday, March 13, 2025
6:30pm-8:30pm
Virtual



Registration is reserved for
Judy Center Child Care Partners.



To Register:



OR

[CLICK HERE.](#)



Judy Center programming is developed with funds from the Maryland State Department of Education, Division of Early Childhood.

The Judy Center Early Learning Hub at
Rolling Terrace Elementary School
Spring 2025

Child Care Providers' Professional Development Series
Abilities Network Project ACT



Training #2

“Treat Yourself”

Self-Care Strategies for the ECE Professional



This training addresses the importance of self-care for teachers and administrators. Through self-reflective, hands-on activities and experiences, teachers will explore and increase their familiarity with best practices in self-care, including breathing techniques, using mantras, getting enough rest, and feeling gratitude. Providers and administrators will create a plan to increase the use of self-care strategies in their program. This training will be offered in English, only.

Core of Knowledge Areas:

Professionalism - 1 hour; Special Needs - 1 hour

Thursday, March 20, 2025
6:30pm - 8:30pm
Virtual

Registration is reserved for
Judy Center Child Care Partners.

To Register:



OR

CLICK HERE.

